

# FTB-8510G

Packet Blazer

NETWORK TESTING—TRANSPORT AND DATACOM

## Performance assurance for Ethernet-based services

- Complete EtherSAM (ITU-T Y.1564) test suite. EtherSAM is the new standard for turning up and troubleshooting mobile backhaul and business Ethernet services
- LAN and WAN PHY capability in a single module
- Fully integrated functionality for assessing the performance of Ethernet transport networks
- Packet jitter measurement to qualify Ethernet transport networks for transmission of delay-sensitive traffic such as video and voice-over-IP (VoIP)
- Throughput, back-to-back, latency and frame loss measurements as per RFC 2544 (bidirectional)
- Multistream generation and analysis, allowing quality of service (QoS) verification through VLAN and ToS/DSCP prioritization testing
- Up to 10 Gbit/s full-line-rate data capture and decode
- MPLS, MPLS-TP, PBB-TE and IPv4/IPv6 support for complete Carrier Ethernet validation

## Platform Compatibility

- FTB-500 Platform
- FTB-200 Compact Platform



Assessing  
Next-Gen Networks

# The Choice for 10 Gigabit Ethernet Performance Assurance

EXFO's FTB-8510G Packet Blazer™ offers performance assurance for 10 Gigabit Ethernet-based services. Its suite of test applications provides all the measurements required for validating service-level agreements (SLAs) between service providers and their customers. Housed in the FTB-500 Platform or FTB-200 Compact Platform, the FTB-8510G module tests connectivity in its native format: 10GBASE-xR or 10GBASE-xW used for transport of Ethernet-based LAN-to-LAN services. It can also be used to test next-generation SONET/SDH, hybrid multiplexers, dark fiber or xWDM networks running 10 Gigabit Ethernet interfaces.

Combined with its rack-mounted manufacturing/R&D-environment counterpart, the IQS-8510G Packet Blazer, the FTB-8510G simplifies and speeds up the deployment of Ethernet services.



*The FTB-8510G Packet Blazer 10 Gigabit Ethernet Test Module can be housed in the FTB-200 Compact Platform. Also shown in the platform, is the FTB-8510B Ethernet Test Module.*



*The FTB-8510G Packet Blazer 10 Gigabit Ethernet Test Module can also be combined in the FTB-500 Platform with the FTB-8510B Packet Blazer Ethernet Test Module and the FTB-8130 Transport Blazer Next-Generation SONET/SDH Test Module.*

## Key Features

- Complete EtherSAM (ITU-T Y.1564) test suite allowing full validation of today's Ethernet services (bidirectional results through dual test set)\*
- Measures throughput, back-to-back, latency and frame loss as per RFC 2544 (bidirectional results through dual test set)
- Multistream generation and analysis, providing per-stream measurements for throughput, latency, frame loss and packet jitter
- LAN PHY and WAN PHY available in a single module
- Simultaneous traffic generation and reception at 100 % wire speed for 10GBASE-SR, -ER, -LR, -SW, -EW or -LW full-duplex interfaces at all valid frame sizes
- Transmits and analyzes up to ten streams, perfect for installing, commissioning and maintaining Ethernet networks
- UDP, TCP and IP header integrity validation
- Easy-to-use smart user interface (SUI) for configurable screens, customization of test suites, as well as real-time and historical performance reporting
- Capability to remote control the Packet Blazer test module with the Visual Guardian Lite software or VNC
- Configurable advanced filters for in-depth network troubleshooting
- PBB-TE and MPLS support for Carrier Ethernet
- Up to 10 Gbit/s full-line-rate data capture and decode
- Smart Loopback
- Service disruption time measurement
- Internet protocol version 6 (IPv6) testing

\* Patent pending

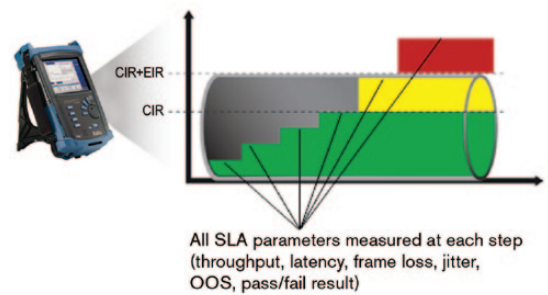
# EtherSAM: The New Standard in Ethernet Testing

ITU-T Y.1564 is the new standard for turning up and troubleshooting Carrier Ethernet services. This methodology is completely adapted to today's Ethernet services especially mobile backhaul and commercial services. Up to now, RFC 2544 has been the most widely used methodology. However, it was designed for network device testing in the lab, not for services testing in the field. ITU-T Y.1564 is the first testing standard developed for the field. It has a number of advantages over the RFC 2544 including validation of critical SLA criteria such as packet jitter and QoS measurements. This methodology is also significantly faster, therefore saving time and resources while optimizing QoS.

Contrary to other methodologies, EtherSAM supports new multiservice offerings. It can simulate all types of services that will run on the network and simultaneously qualify all key SLA parameters for each of these services. Moreover, it validates the QoS mechanisms provisioned in the network to prioritize the different service types, resulting in more accurate validation and much faster deployment and troubleshooting. EtherSAM is comprised of two phases, the service configuration test and the service performance test.

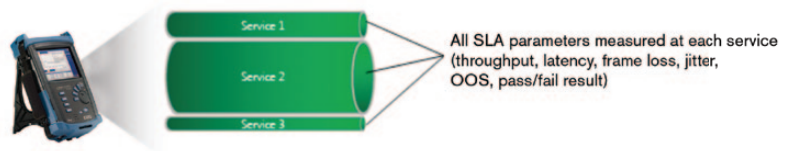
## Service Configuration Test

The service configuration test consists in sequentially testing each service. It validates that the service is properly provisioned and that all specific KPIs or SLA parameters are met.



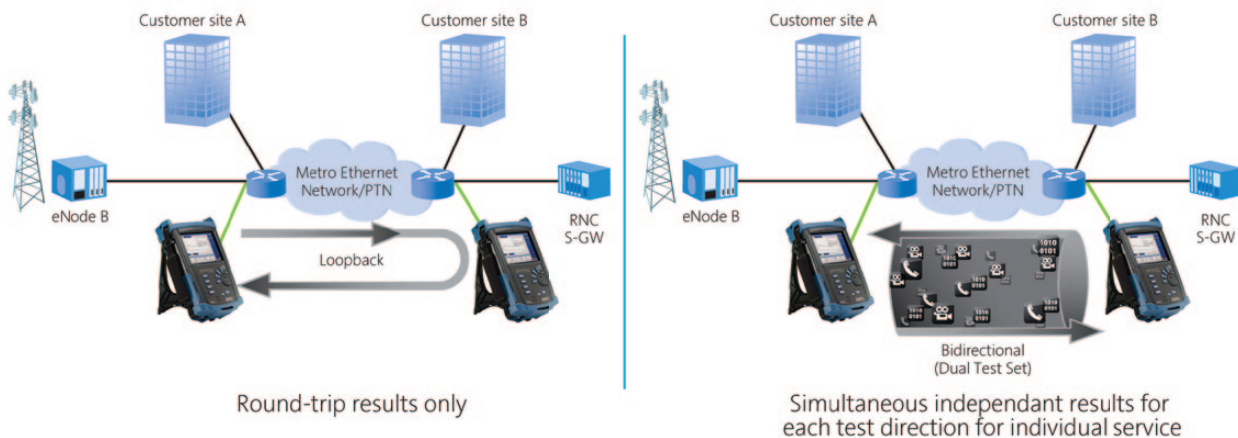
## Service Performance Test

Once the configuration of each individual service is validated, the service performance test simultaneously validates the quality of all the services over time.



## EtherSAM Bidirectional Results

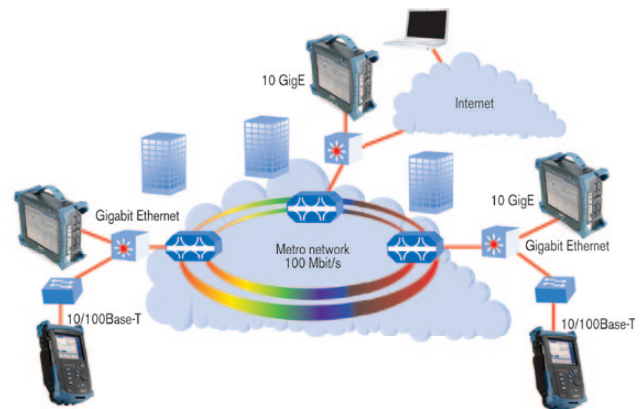
EXFO's EtherSAM approach proves even more powerful as it executes the complete ITU-T Y.1564 test with bidirectional measurements. Key SLA parameters are measured independently in each test direction, thus providing 100 % first-time-right service activation—that is the highest level of confidence in service testing.



## RFC 2544 Test Suite

The FTB-8510G Packet Blazer can perform the RFC 2544 test suite for 10 GbE LAN/WAN interface at all frame sizes and at full line rate, allowing the provider to certify that the circuit is efficient and error-free at 100 % utilization.

The Packet Blazer supports automated RFC 2544 testing, including throughput, latency, burst (back-to-back) and frame loss. Automation also provides ease of use for field technicians by enabling accurate, efficient measurements and results through a clear and simple pass/fail indication. In addition, the Packet Blazer generates reports that can be given to customers for future reference related to their specific SLAs.



Testing can be performed end-to-end or end-to-core, depending on the SLA. Remote testing is also possible.

## Efficient Testing Leads to Reliable Performance

### MPLS, MPLS-TP and PBB-TE: Carrier Ethernet Transport Solution Testing

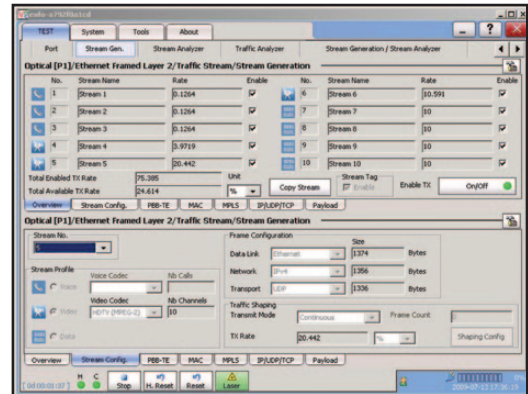
As technologically-sophisticated business and residential consumers continue to drive demand for premium, high-bandwidth data services such as voice and video, service providers worldwide are evolving their transport infrastructures to support these bandwidth and quality intensive services. No longer is an all-IP core sufficient; providers must now expand their IP convergence to the edge/metro network, in a cost-effective, quality-assured manner. Ethernet has long been accepted as an inexpensive, scalable data networking solution in LAN environments. The stringent QoS expectations require solutions that tap into the cost-effectiveness of Ethernet without sacrificing the benefits of connection-oriented (albeit it costly) TDM solutions such as SONET/SDH.

Ethernet tunneling technologies such as Provider Backbone Bridge-Traffic Engineering or PBB-TE (also referred to as PBT) and transport MPLS address these requirements. These technologies enable connection-oriented Ethernet, providing carriers with a means of offering scalable, reliable and resilient Ethernet services. The PBB-TE and MPLS options on the FTB-8510G Packet Blazer offer service providers a comprehensive field tool to efficiently qualify Ethernet services from end to end, validating metro and core tunneling technologies.

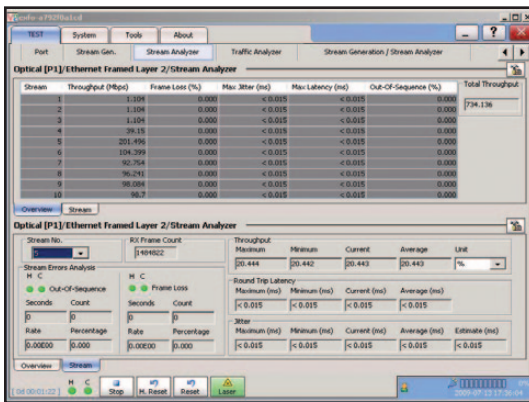
## EtherBERT™

Ethernet is increasingly carried across a variety of layer 1 media over longer distances. This creates a growing need for the certification of Ethernet transport on a bit-per-bit basis, which can be done using bit-error-rate testing (BERT).

BERT uses a pseudo-random binary sequence (PRBS) encapsulated into an Ethernet frame, making it possible to go from a frame-based error measurement to a bit-error-rate measurement. This provides the bit-per-bit error count accuracy required for acceptance testing of physical-medium transport systems. BERT-over-Ethernet should usually be used when Ethernet is carried transparently over layer 1 media, in cases such as Ethernet over DWDM, CWDM or dark fiber.



Multistream bandwidth profiles.



Statistics for each stream.

## Ethernet QoS Measurements

Data services are making a significant shift toward supporting a variety of applications on the same network. Multiservice offerings such as triple-play services have fuelled the need for QoS testing to ensure the condition and reliability of each service and fully qualify SLA parameters. The FTB-8510G Packet Blazer allows service providers to simultaneously simulate and qualify different applications through its multistream application. The user has the capability to configure up to ten streams with different Ethernet and IP QoS parameters such as VLAN ID (802.1Q), VLAN Priority (802.1p), VLAN stacking (802.1ad Q-in-Q), ToS and DSCP. Specific stream profiles to transmit VoIP, video and data can be selected for each stream. Throughput, latency, frame loss and packet jitter (RFC 3393) measurements are also available simultaneously for each stream, allowing fast and in-depth qualification of all SLA criteria.

## Ethernet Advanced Troubleshooting

The FTB-8510G provides a number of advanced features essential for in-depth troubleshooting in the event of network failures or impairments. The advanced filtering option allows the user to configure up to ten filters with each up to four operands, which will be applied to the received Ethernet traffic. Detailed statistics are available for each configured filter providing the user with critical information required to pinpoint specific problems. Additionally, the FTB-8510G supports a traffic scan feature that allows quick identification and monitoring of VLAN and MPLS flows on the network. This can help clearly identify top bandwidth users.

The FTB-8510G also supports full-line-rate data capture and decode. This key troubleshooting tool enables field technicians to easily identify complex network issues. The comprehensive capture feature includes the capability to configure capture filters and triggers to quickly zero-in on network events.

# Functional Specifications

## OPTICAL INTERFACES

	10GBASE-SW	10GBASE-SR	10GBASE-LW	10GBASE-LR	10GBASE-EW	10GBASE-ER
Wavelength	850 nm	850 nm	1310 nm	1310 nm	1550 nm	1550 nm
	Multimode	Multimode	Singlemode	Singlemode	Singlemode	Singlemode
Tx level (802.3ae-compliant)	-7.3 to -1 dBm	-7.3 to -1 dBm	-8.2 to 0.5 dBm	-8.2 to 0.5 dBm	-4.7 to 4.0 dBm	-4.7 to 4.0 dBm
Rx operating range	-9.9 to -1.0 dBm	-9.9 to -1.0 dBm	-14.4 to 0.5 dBm	-14.4 to 0.5 dBm	-15.8 to -1.0 dBm	-15.8 to -1.0 dBm
Transmission bit rate	9.95328 Gbit/s ± 4.6 ppm*	10.3125 Gbit/s ± 4.6 ppm*	9.95328 Gbit/s ± 4.6 ppm*	10.3125 Gbit/s ± 4.6 ppm*	9.95328 Gbit/s ± 4.6 ppm*	10.3125 Gbit/s ± 4.6 ppm*
Reception bit rate	9.95328 Gbit/s ± 150 ppm	10.3125 Gbit/s ± 150 ppm	9.95328 Gbit/s ± 150 ppm	10.3125 Gbit/s ± 150 ppm	9.95328 Gbit/s ± 150 ppm	10.3125 Gbit/s ± 150 ppm
Tx operational wavelength range (802.3ae-compliant)	840 nm to 860 nm	840 nm to 860 nm	1260 nm to 1355 nm	1260 nm to 1355 nm	1530 nm to 1565 nm	1530 nm to 1565 nm
Measurement accuracy (uncertainty)						
frequency	±4.6 ppm	±4.6 ppm	±4.6 ppm	±4.6 ppm	±4.6 ppm	±4.6 ppm
optical power	±2 dB	±2 dB	±2 dB	±2 dB	±2 dB	±2 dB
Maximum Rx before damage	0 dBm	0 dBm	1.5 dBm	1.5 dBm	4.0 dBm	4.0 dBm
Jitter compliance	IEEE 802.3ae	IEEE 802.3ae	IEEE 802.3ae	IEEE 802.3ae	IEEE 802.3ae	IEEE 802.3ae
Ethernet classification	IEEE 802.3ae	IEEE 802.3ae	IEEE 802.3ae	IEEE 802.3ae	IEEE 802.3ae	IEEE 802.3ae
Laser type	VCSEL	VCSEL	DFB	DFB	EML	EML
Eye safety	Class 1 laser; complies with 21 CFR 1040.10 and IEC 60825-1	Class 1 laser; complies with 21 CFR 1040.10 and IEC 60825-1	Class 1 laser; complies with 21 CFR 1040.10 and IEC 60825-1	Class 1 laser; complies with 21 CFR 1040.10 and IEC 60825-1	Class 1M laser; complies with 21 CFR 1040.10 and IEC 60825-1	Class 1M laser; complies with 21 CFR 1040.10 and IEC 60825-1
Connector	Duplex LC	Duplex LC	Duplex LC	Duplex LC	Duplex LC	Duplex LC
Transceiver type (compliant with XFP MSA)	XFP	XFP	XFP	XFP	XFP	XFP

\* When clocking is in internal mode

## SYNCHRONIZATION INTERFACES

### DS1/E1 external input clock interface

Parameter	DS1	E1
Rx level sensitivity (short haul only)	For 772 kHz: TERM: 6 dB (cable loss only)	For 1024 kHz: TERM: 6 dB (cable loss only)
Reception bit rate	1.544 Mbit/s ± 50 ppm	2.048 Mbit/s ± 50 ppm
Input jitter tolerance	AT&T PUB 62411, GR-499 section 7.3	G.823 section 7.2
Line coding	AMI and B8ZS	HDB3 and AMI
Input impedance (resistive termination)	100 ohms ± 5 %, balanced	120 ohms ± 5 %, balanced
Connector type	BANTAM	BANTAM

### Clock out interface

Parameter	Value
Tx pulse amplitude	600 mVpp ± 130 mV
Transmission frequency	LAN WAN
Clock divider = 16	644.53 MHz 622.08 MHz
Clock divider = 32	322.266 MHz 311.04 MHz
Clock divider = 64	161.133 MHz 155.52 MHz
Output configuration	AC coupled
Load impedance	50 ohms
Maximum cable length	3 meters
Connector type	SMA

# Functional Specifications (Cont'd)

## OPTICAL INTERFACES

Optical interfaces	10 GigE LAN and 10 GigE WAN <sup>a</sup>
Available wavelengths	850, 1310 and 1550 nm

## ELECTRICAL INTERFACES

Electrical interfaces	External clock DS1/E1 and clock output	
External clock DS1/E1	Line coding	DS1: AMI and B8ZS E1: AMI and HDB3
	Termination mode	DS1/E1: Term
	Framing	DS1: SF and ESF E1: PCM30, PCM30CRC, PCM31 and PCM31CRC
	Clocking	Internal, external (BITS) and recovered
Clock output	Clock out	Clock out divider: 16, 32 and 64

## TESTING

EtherSAM (ITU-T Y.1564)	Capability to perform the service configuration test and service performance test as per ITU-T Y.1564. Tests can be performed to a loopback or dual test set mode for bidirectional results.
RFC 2544	Throughput, back-to-back, frame loss and latency measurements according to RFC 2544. Frame size: RFC-defined sizes, user-configurable (bidirectional).
BERT	Unframed layer 1 up to layer 4 with or without VLAN Q-in-Q.
Patterns (BERT)	PRBS 2E9-1, PRBS 2E11-1, PRBS 2E15-1, PRBS 2E20-1, PRBS 2E23-1, PRBS 2E31-1, and up to ten user patterns.
Error insertion (BERT)	FCS, bit, 64B/66B Block.
Error measurement	LAN/WAN: jabber/giant, runt, undersize, oversize, FCS, 64B/66B Block. WAN: B1, B2, B3, REI-L, REI-P, UDP, TCP and IP header checksum.
Error measurement (BERT)	Bit error, bit mismatch 0, bit mismatch 1, performance monitoring (G.821 and G.826).
Alarm insertion	LOS, link down, local fault, remote fault, LSS (BERT).
Alarm detection	WAN: SEF, LOF, AIS-L, RDI-L, AIS-P, RDI-P, LCD-P, LOP-P, ERDI-PSD, ERDI-PCD, ERDI-PPD, UNEQ-P. LOS, link down, local fault, remote fault, frequency offset, LSS (BERT).
Service disruption time measurement (BERT)	WAN: SEF, LOF, AIS-L, RDI-L, AIS-P, RDI-P, LCD-P, LOP-P, ERDI-PSD, ERDI-PCD, ERDI-PPD, PLM-P, UNEQ-P, Link (WIS). Defect or No Traffic mode. Disruption time statistics include shortest, longest, last, average, total and count.
Multistream generation	Capability to transmit up to ten streams. Configuration parameters are: packet size, transmission mode (N-Frames, Burst, N-Burst, Ramp, N-Ramp and Continuous), MAC source/destination address, VLAN ID, VLAN priority, IP source/destination address, ToS field, DSCP field, TTL, UDP/TCP source/destination port and payload. Selectable predefined stream profiles for voice, video and data streams. VoIP codecs (G.711, G.723.1, G.729), video (MPEG-2 SDTV, MPEG-2 HDTV, MPEG-4 HDTV).
Multistream analysis	Capability to analyze packet jitter, latency, throughput, frame loss and out-of-sequence per-stream statistics.
VLAN stacking (Q-in-Q)	Capability to generate streams with up to three layers of VLAN (including IEEE802.1ad QinQ tagged VLAN) and to filter received traffic by VLAN ID or VLAN priority at any of the stacked VLAN layers.
Traffic filtering	Capability to analyze the incoming traffic and provide statistics according to a set of up to ten configurable filters. Filters can be configured for MAC source/destination address, VLAN ID, VLAN priority, IP source/destination address, ToS field, DSCP field, TCP source/destination port and UDP source/destination port. VLAN filtering can be applied to any of the stacked VLAN layers.
Ethernet statistics	Multicast, broadcast, unicast, N-unicast, pause frame, frame size distribution, bandwidth, utilization, frame rate, frame loss, out-of-sequence frames, in-sequence frames.
Packet jitter statistics	Delay variation statistics (ms): min., max., last, average, jitter measurement estimate.
Flow control injection (frame analyzer)	Packet pause time.
Flow control statistics (frame analyzer and RFC 2544)	Pause time, last pause time, max. pause time, min. pause time, paused frames, abort frames, frames Tx, frames Rx.
Advanced filtering <sup>a</sup>	Capability to configure up to ten filters of four fields each that can be combined with AND/OR/NOT operations. A mask is also provided for each field value to allow for wildcards. Complete statistics are gathered for each defined filter.
Data capture <sup>a</sup>	Capability to perform 10G full-line-rate data capture and decode. Capability to configure detailed capture filters and triggers as well as capture slicing parameters.
IP scan <sup>a</sup>	Capability to scan incoming live traffic and auto-discover all VLAN/VLAN Priority and MPLS ID/COS flows. Capability to provide statistics for each flow including frame count and bandwidth.
PBB-TE <sup>a</sup>	Capability to generate and analyze streams with PBB-TE data traffic, including configuration of B-MAC (source and destination), B-VLAN and I-tag (as per 802.1ah), and to filter received traffic by any of these fields.
MPLS <sup>a</sup>	Capability to generate and analyze streams with up to two layers of MPLS labels and to filter received traffic by MPLS label or COS.
IPv6 <sup>a</sup>	Capability to perform BERT, RFC 2544, traffic generation and analysis and Smart Loopback tests over IPv6. Ping, traceroute, neighbor discovery and stateless auto-configuration.

## ADDITIONAL TEST AND MEASUREMENT FUNCTIONS

Power measurement	Supports optical power measurement, displayed in dBm.
Frequency measurement	Supports clock frequency offset generation and measurements (i.e., received frequency and deviation of the input signal clock from nominal frequency).
Frequency offset generation	
Range	±120 ppm
Resolution	±1 ppm
Accuracy (uncertainty)	±4.6 ppm
Frequency offset measurement	
Range	±150 ppm
Resolution	±1 ppm
Accuracy (uncertainty)	±4.6 ppm
Signal label control and monitoring	Ability to configure and monitor J0 trace, J1 trace and payload signal label C2 (WAN).
Dual test set	Performs end-to-end, bidirectional performance testing (as required by leading standards bodies)—remote Packet Blazer controlled via the LAN connection under test.
DHCP client	Capability to connect to a DHCP server to obtain its IP address and subnet mask to connect to the network.
Smart Loopback	Capability to return traffic to the local unit by swapping packet overhead up to layer 4 of the OSI stack.
IP tools	Capability to perform ping and traceroute functions.

## ADDITIONAL FEATURES

Expert mode	Ability to set thresholds in RFC 2544 and BERT mode to provide a PASS/FAIL status.
Scripting <sup>b</sup>	The built-in Visual Basic .NET scripting engine and embedded macrorecorder provide a simple means of automating test cases and routines. Embedded scripting routines provide a powerful means of creating advanced test scripts.
Event logger	Supports logging of test results, and the ability to print, export (to a file), or export the information contained in the logging tool.
Power up and restore	In the event of a power failure to the unit, the active test configuration and results are saved and restored upon bootup.
Save and load configuration	Ability to store and load test configurations to/from non-volatile memory.
Configurable test views <sup>b</sup>	Allows users to customize their test views; i.e., to dynamically insert or remove test tabs/windows, in addition to creating new test windows, so as to accurately match their testing needs.
Configurable test timer	Allows a user to set a specific start and stop time for tests.
Test favorites	Capability to select and load from predefined or user-modified test conditions.
Report generation	Ability to generate test reports in the following user-selectable formats: .pdf, .html, .txt and .csv.
Graph	Allows to graphically display the test statistics of the performance (RFC 2544) and frame analysis tests.
Screen capturing	Capability to gather a snap-shot of the screen for future use.
Logger printing <sup>c</sup>	Capability to send logger messages to a supported local printer.
Remote control	Remote control through Visual Guardian Lite software or VNC.

### Notes

a. Available as an option.      b. Available on the FTB-200 platform only.      c. Available on the FTB-500 and IQS-600 platforms only.

## MODULE SPECIFICATIONS

	FTB-8510G-LAN	FTB-8510G-WAN	FTB-8510G-LAN/WAN
Port	One 10 Gigabit Ethernet port	One 10 Gigabit Ethernet port	One 10 Gigabit Ethernet port
Connector type	LC	LC	LC
Optical transceiver	850 nm optics (10GBASE-SR)	850 nm optics (10GBASE-SW)	850 nm optics (10GBASE-SR/-SW)
	1310 nm optics (10GBASE-LR)	1310 nm optics (10GBASE-LW)	1310 nm optics (10GBASE-LR/-LW)
	1550 nm optics (10GBASE-ER)	1550 nm optics (10GBASE-EW)	1550 nm optics (10GBASE-ER/-EW)
Port capacity	Full-line-rate traffic generation and analysis	Full-line-rate traffic generation and analysis	Full-line-rate traffic generation and analysis
Ethernet testing	RFC 1242, RFC 2544, RFC 3393, multistream traffic generation and analysis, EtherBERT	RFC 1242, RFC 2544, RFC 3393, multistream traffic generation and analysis, EtherBERT	RFC 1242, RFC 2544, RFC 3393, multistream traffic generation and analysis, EtherBERT

## GENERAL SPECIFICATIONS

Size (H x W x D)	96 mm x 25 mm x 280 mm	(3 ¾ in x 1 in x 11 in)	
Weight (without transceiver)	0.5 kg	(1.2 lb)	
Temperature			
	operating	0 °C to 40 °C	(32 °F to 104 °F)
	storage	-40 °C to 60 °C	(-40 °F to 140 °F)

## ORDERING INFORMATION

### MODULE

#### FTB-8510G-XX-XX

#### Model

- FTB-8510G-**LAN** = Packet Blazer 10 GigE, 1 port 10 Gigabit Ethernet LAN PHY (10.3125 Gbit/s)
- FTB-8510G-**WAN** = Packet Blazer 10 GigE, 1 port 10 Gigabit Ethernet WAN PHY (9.953 Gbit/s)
- FTB-8510G-**LAN/WAN** = Packet Blazer 10 GigE, 1 port 10 Gigabit Ethernet LAN and WAN PHY (10.3125 and 9.953 Gbit/s)

Example: FTB-8510G-LAN-MPLS

#### Other options

- 00** = Without other options
- PBB-TE** = PBB-TE testing
- MPLS** = MPLS testing
- Adv\_filtering** = Advanced filtering capabilities
- IPv6** = IPv6 testing capabilities
- EtherSAM** = EtherSAM (ITU-T Y.1564) testing capabilities
- Data\_Capture** = Data capture and decode capabilities
- TRAFFIC-SCAN** = VLAN/MPLS traffic scan

### TRANSCEIVER

- FTB-85900** = 10GBase-SR/-SW (850 nm, LAN/WAN PHY) LC connectors; optical XFP transceiver module for 8510G Packet Blazer
- FTB-85901** = 10GBase-LR/-LW (1310 nm, LAN/WAN PHY) LC connectors; optical XFP transceiver module for 8510G Packet Blazer
- FTB-85902** = 10GBase-ER/-EW (1550 nm, LAN/WAN PHY) LC connectors; optical XFP transceiver module for 8510G Packet Blazer

EXFO Corporate Headquarters > 400 Godin Avenue, Quebec City (Quebec) G1M 2K2 CANADA | Tel.: +1 418 683-0211 | Fax: +1 418 683-2170 | info@EXFO.com

Toll-free: +1 800 663-3936 (USA and Canada) | [www.EXFO.com](http://www.EXFO.com)

EXFO America	3701 Plano Parkway, Suite 160 Plano, TX 75075 USA	Tel.: +1 800 663-3936	Fax: +1 972 836-0164
EXFO Asia	100 Beach Road, #22-01/03 Shaw Tower SINGAPORE 189702	Tel.: +65 6333 8241	Fax: +65 6333 8242
EXFO China	36 North, 3 <sup>rd</sup> Ring Road East, Dongcheng District Room 1207, Tower C, Global Trade Center Beijing 100013 P. R. CHINA	Tel.: +86 10 5825 7755	Fax: +86 10 5825 7722
EXFO Europe	Omega Enterprise Park, Electron Way Chandlers Ford, Hampshire S053 4SE ENGLAND	Tel.: +44 2380 246810	Fax: +44 2380 246801
EXFO NetHawk	Elektronikkatie 2 FI-90590 Oulu, FINLAND	Tel.: +358 (0)403 010 300	Fax: +358 (0)8 564 5203
EXFO Service Assurance	270 Billerica Road Chelmsford, MA 01824 USA	Tel.: +1 978 367-5600	Fax: +1 978 367-5700

EXFO is certified ISO 9001 and attests to the quality of these products. This device complies with Part 15 of the FCC Rules. Operation is subject to the following two conditions: (1) this device may not cause harmful interference, and (2) this device must accept any interference received, including interference that may cause undesired operation. EXFO has made every effort to ensure that the information contained in this specification sheet is accurate. However, we accept no responsibility for any errors or omissions, and we reserve the right to modify design, characteristics and products at any time without obligation. Units of measurement in this document conform to SI standards and practices. In addition, all of EXFO's manufactured products are compliant with the European Union's WEEE directive. For more information, please visit [www.EXFO.com/recycle](http://www.EXFO.com/recycle). Contact EXFO for prices and availability or to obtain the phone number of your local EXFO distributor.

For the most recent version of this spec sheet, please go to the EXFO website at <http://www.EXFO.com/specs>

In case of discrepancy, the Web version takes precedence over any printed literature.