



# ORing

## IGS-1082GP

Industrial 10-port unmanaged Gigabit Ethernet switch with  
8x10/100/1000Base-T(X) and 2x100/1000Base-X, SFP socket

### Features

- Support 9.6K Bytes Jumbo Frame
- Support auto-negotiation and auto-MDI/MDI-X
- Support store and forward transmission
- Support flow control
- Support up to **9.6K** Bytes Jumbo Frame
- Support up to **4Mbit** Packet buffer
- Support wide range power input **12~48VDC**
- Provide DIP-switch to setting SFP speed
- Provided relay output for power failed warning system
- Rigid IP-30 housing design
- DIN-Rail and wall mounting enabled

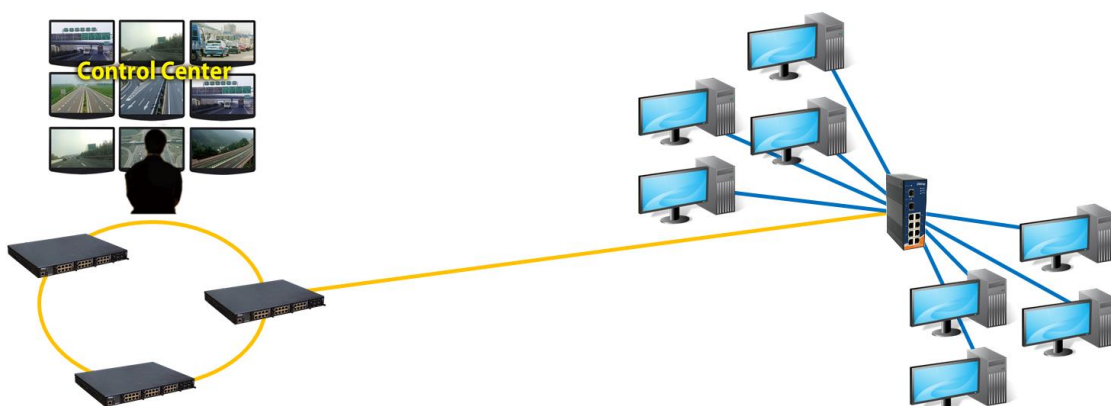


### Introduction

IGS-1082GP is full Gigabit unmanaged Ethernet switch with 8x10/100/1000Base-T(X) copper ports and 2x100/1000Base-X SFP ports. The switch support wide operating temperature from -40 °C to 75 °C for harsh environment. Therefore, the switch is one of the most reliable choices for rolling stock and highly-unmanaged Ethernet application.

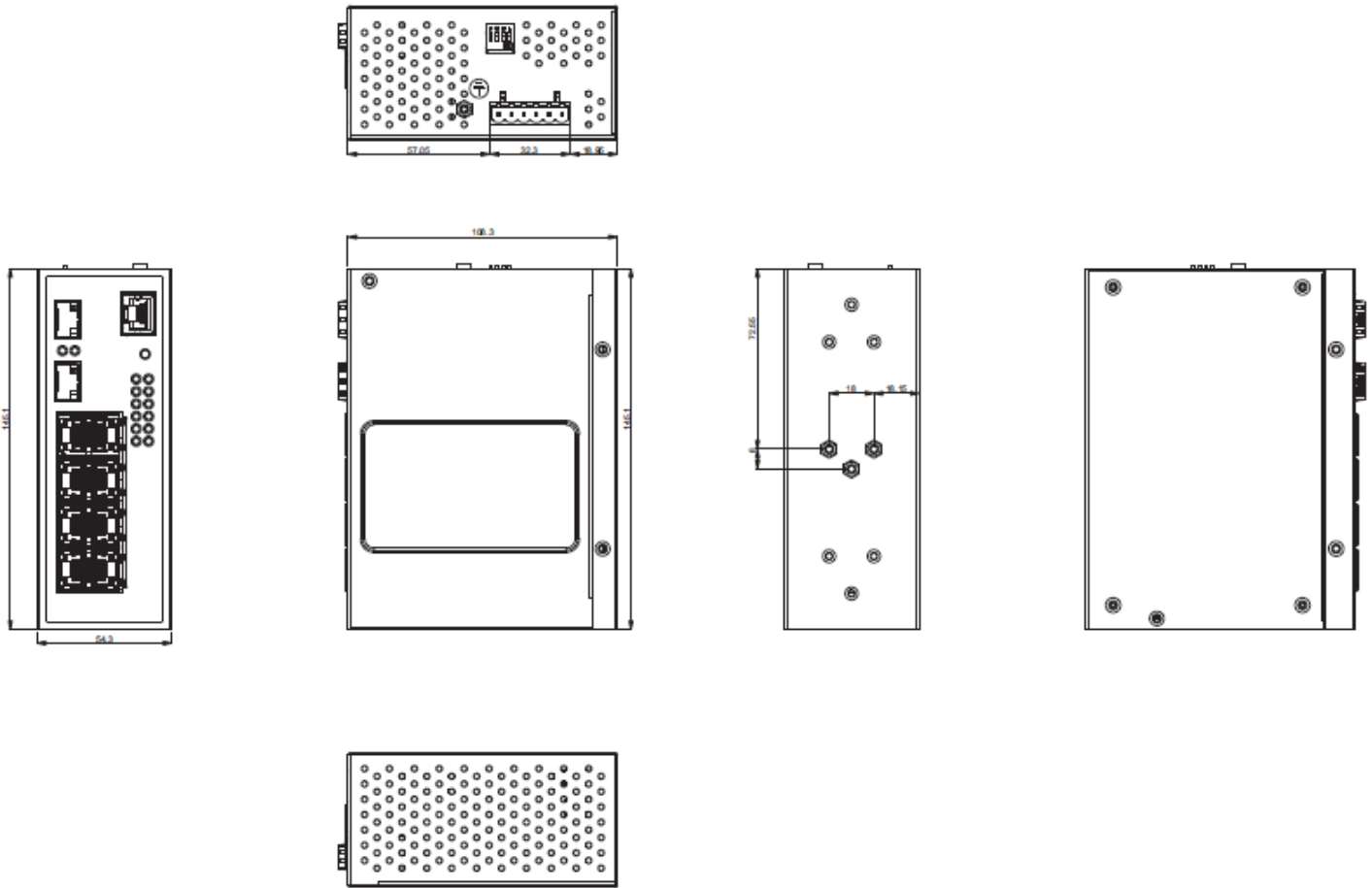
### Practical Operation

IGS-1082GP can be used in connecting several Ethernet devices like Ethernet I/O, IP-Camera or other Ethernet switches. In addition, there are two different power inputs at terminal block to avoid interruption caused by power down. When the primary DC power input fails, the backup power input will take over immediately to guarantee a non-stop operation.



Ethernet Connection

## Dimension



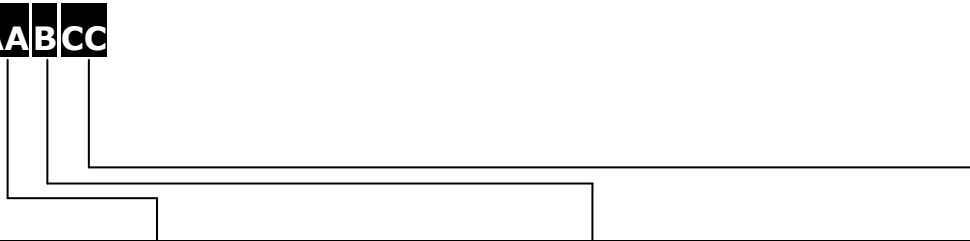
## Specifications

ORing Switch Model	IGS-1082GP
<b>Physical Ports</b>	
10/100/1000Base-T(X) Ports in RJ45 Auto MDI/MDIX	8
100/1000Base-X with SFP port	2
<b>Technology</b>	
Ethernet Standards	IEEE 802.3 for 10Base-T IEEE 802.3u for 100Base-TX and 100Base-FX IEEE 802.3ab for 1000Base-T IEEE 802.3z for 1000Base-X IEEE 802.3x for Flow control
MAC Table	8K
Processing	Store-and-Forward
Switch Properties	Switching latency: 7 us Switching bandwidth: 20Gbps
Jumbo frame	Up to 9.6K Bytes
Packet buffer	4Mbit
<b>LED Indicators</b>	
Power Indicator (PWR)	Green : Power LED x 3

Fault Indicator (Fault)	Amber : Indicate power failed even warning
10/100/1000Base-T(X) RJ45 Port Indicator	Green for port Link/Act. Dual color LED for speed indicator ~ Green for 1000Mbps / Amber for 100Mbps / off-light for 10Mbps
100/1000Base-X SFP Port Indicator	Green for port Link/Act.
<b>DIP Switch</b>	
DIP-Switch 1	Power-2 failed warning : (ON) enable, (OFF) disable
DIP-Switch 2	Power-1 failed warning : (ON) enable, (OFF) disable
DIP-Switch 3	DIP switch 3 and 4 (ON) : SFP speed setting to 100Mbps
DIP-Switch 4	DIP switch 3 and 4 (OFF) : SFP speed setting to 1000Mbps(default)
<b>Fault Contact</b>	
Relay	Relay output to carry capacity of 1A at 24VDC
<b>Power</b>	
Redundant Input power	Dual DC inputs. 12 ~ 48VDC on 6-pin terminal block
Power consumption (Typ.)	10 Watts
Overload current protection	Present
Reverse Polarity Protection	Present
<b>Physical Characteristic</b>	
Enclosure	IP-30
Dimension (W x D x H)	54.3(W) x 108.3(D) x 145.1(H) mm (2.13x4.26x5.71 inches.)
Weight (g)	837g
<b>Environmental</b>	
Storage Temperature	-40 to 85°C (-40 to 185°F)
Operating Temperature	-40 to 75°C (-40 to 167°F )
Operating Humidity	5% to 95% Non-condensing
<b>Regulatory Approvals</b>	
EMC	EN55032, EN55024(CE EMC), FCC Part 15B, EN61000-3-2, EN61000-3-3
EMI	CISPR 32, EN55032, FCC Part 15B class A
EMS	IEC 61000-4-2 (ESD), IEC 61000-4-3 (RS), IEC 61000-4-4 (EFT), IEC 61000-4-5 (Surge), IEC 61000-4-6 (CS), IEC 61000-4-8 (PFMF), IEC 61000-4-11 (DIP)
Shock	IEC60068-2-27
Free Fall	IEC60068-2-32
Vibration	IEC60068-2-6
Safety	EN60950-1 compliant
<b>MTBF</b>	TBD
<b>Warranty</b>	5 years

## Ordering Information

**IGS-1AABCC**



Code Definition	10/100/1000Base-T(X) Port Number	Additional Port Number	Additional Port Type
Option	- 08: 8 ports	- 2: 2 ports	-GP: Gigabit SFP ports

Available Model	Model Name	Description
	IGS-1082GP	Industrial 10-port unmanaged Gigabit Ethernet switch with 8x10/100/1000Base-T(X) and 2x100/1000Base-X, SFP socket

## Packing List

- IGS-1082GP x 1
- Wall-mount Kit x 2
- Quick Installation Guide x 1
- DIN-Rail Kit x 1

## Optional Accessories

- SFP100 series : 100Mbps SFP optical transceiver
- SFP 1G series : 1Gbps SFP optical transceiver
- DR/SDR/DRP 48/24V Series Din rail power supply