

Overture 6500

Service Delivery Platform

The Overture 6500 is a scalable, high resiliency Carrier Ethernet aggregation and switching platform that delivers performance-assured services over fiber, E-Access, copper, TDM and SONET. This flexible platform supports today's business and cloud services, mobile backhaul, wholesale, and metro infrastructure applications. The Overture 6500 is also the entry point for *Ensemble OSA*, Overture's open architecture for software-defined services at the metro edge. Together, the Overture 6500 and *Ensemble OSA* represent a fundamentally new approach to the revenue and operational challenges facing service providers.

CE2.0 ETHERNET SWITCHING AND AGGREGATION FOR ANY ACCESS

The 6500 is the first and only platform that consolidates switching and aggregation for Carrier Ethernet E-LINE, E-LAN, E-Access and IP services over fiber, bonded copper, TDM and SONET. The 6500's ability to deliver service over any access from a single platform saves you money and simplifies your day-to-day operation.

MOST SCALABLE METRO EDGE PLATFORM

With configurations for tens to hundreds of customer endpoints and supporting over 3000 unique subscriber service instances, the 6500 is ideal for a range of deployment scenarios at the metro edge. The 6500 is architected with both centralized and distributed switching to minimize entry cost for low bandwidth services without compromising performance for high bandwidth services. Available in two chassis size variants, the 6500 family gives you a common solution for every application, without stranding capital.

COMPREHENSIVE RESILIENCY

Downtime is unacceptable at the metro edge. The 6500's high-availability architecture, including redundant switch/control plane modules and redundant distributed A/B powering, means your customers won't lose service – period. Additional features like cross-card link aggregation, cross card G.8032 v2 rings and cross-card bonding of copper interfaces and TDM circuits allows you to sell services that survive network failures. The 6500 even supports multi-site redundancy to protect against outages that could affect entire geographic areas.

READY FOR SOFTWARE-DEFINED SERVICES

With a fully programmable data path the Overture 6500 is also the entry point for *Ensemble OSA*, Overture's open architecture for software-defined services at the metro edge. An open, multi-layered architecture, *Ensemble OSA* optimizes service creation, activation and assurance, creating an environment for rapid service innovation, reduced operational complexity, and lower costs through automation. Embracing the principles of software defined networking (SDN) and network function virtualization (NFV), service providers are able to maximize operational efficiencies and introduce new revenue-generating services faster and easier than ever before.

The Overture 6500 makes it easy for service providers to deploy reliable Carrier Ethernet 2.0 at the metro edge. It can deliver differentiated, performance-assured services over any access, at any scale. The 6500 provides service providers with the features they need for an entrance to a smarter network.



6508

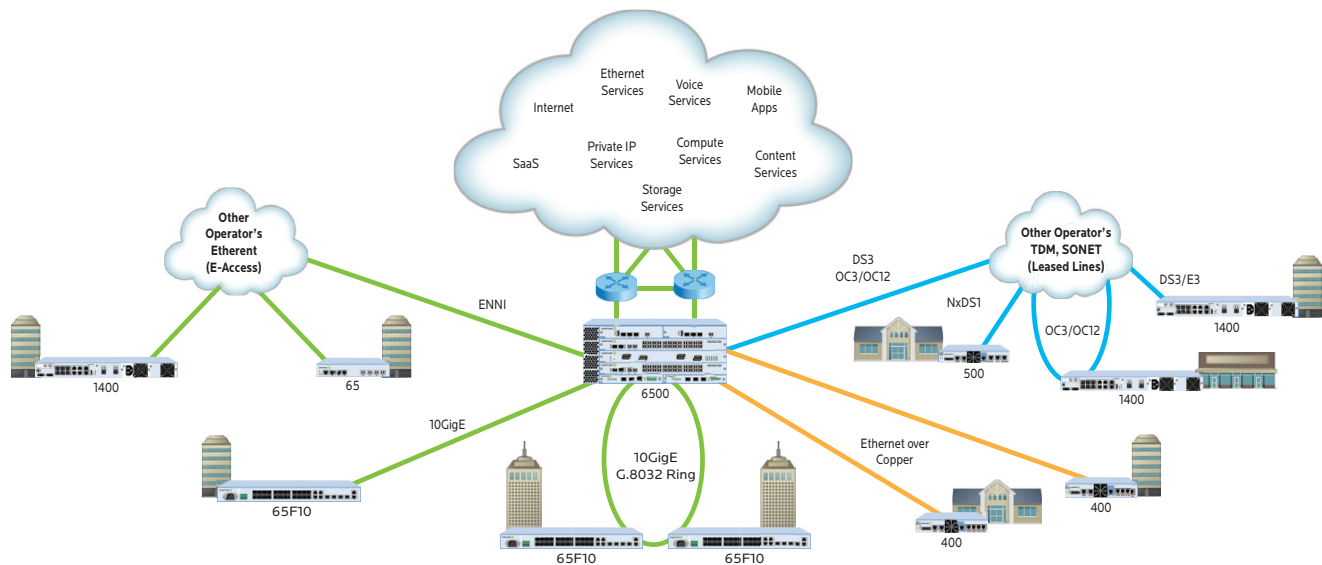


6504

PRODUCT SNAPSHOT

- Performance Assured Ethernet over any media
- Carrier Ethernet over fiber, copper, SONET, TDM and wholesale E-Access
- G.8032 v2 rings
- High resiliency
- Programmable data path
- Ready for software defined networking

Overture 6500



The Overture 6500 simplifies multiservice Carrier Ethernet switching and aggregation

FEATURE	BENEFIT
Only CE2.0 Switching and Aggregation Solution for any Access	Reach more customers faster with performance-assured Ethernet
The Most Scalable Metro Edge Platform	Cost effective solution for any deployment scenario
Most Comprehensive Resiliency Offering Available	Keep your customers connected
Ensemble OSA™ Enabled	Ready for the software-defined services of tomorrow

TECHNICAL SPECIFICATIONS

CAPACITY

	6504 Chassis	6508 Chassis
10GigE	2/6	2/16
100M/1GigE	24/72	24/192
OC3c/12c	4/12	4/32
EoC Pairs	96/288	96/768
Chan OC-12	1/3	1/8
Chan OC-3	4/12	4/32
Chan DS3	12/36	12/96

ETHERNET OVER FIBER

- Line rate 100M/1GigE/10GigE
- 50 ms G.8032 rings
- Link aggregation with LACP
- Cross-card LAG/Ring
- Pluggable SFP/SFP+ optics

ETHERNET OVER COPPER

- 15 Mbps symmetric per pair
- Cross-card bonding
- 24-pair bonding groups
- Integrated TDR

ETHERNET/IP OVER TDM

- MLPPP/EFM over NxDS1
- X.86 over DS3 and nxDS3
- Cross-card T1 bonding, Bonded nxDS3
- BERT Generator/Monitor

ETHERNET OVER SONET

- X.86
- OC-12, OC-3

PHYSICAL

- 2 slot: 3.5H" x 17W" x 11D" (89 mm x 432 mm x 280 mm)
- 3 slot: 7H" x 17W" x 11D" (279 mm x 432 mm x 280 mm)
- 8 slot: 14H" x 17W" x 11D" (560 mm x 432 mm x 280 mm)
- Mounting: 2RU, 4RU or 8RU in standard 19" rack
- Operating temperature: -40° to +149°F (-40° to +65°C)
- Humidity: 0-95% non-condensing relative humidity
- Power: up to 640W

PERFORMANCE ASSURANCE

- RFC2544
- 802.3ah, 802.1ag, Y1731
- Smart loopbacks
- Port mirroring
- RADIUS
- Syslog
- Packet Capture
- L1, L2 Loopback

ETHERNET SERVICES

- E-Line, E-LAN, E-Access
- DHCP Zero touch
- 3,072 EVCs
- Hierarchical QoS
- 802.1p, DSCP, TOS
- 802.1q VLAN tagging
- 802.1ad Q-in-Q
- Link protection with LACP
- 9,600 jumbo frames
- Custom Ethertype setting
- LLDP
- MEF L2CP options
- Queuing and scheduling
 - 3-level scheduling/shaping hierarchy (Interface, virtual interface, queue)
 - 8 CoS Queues per scheduler
 - Strict and WRR

COMPLIANCE AND CERTIFICATION

- Carrier Ethernet 2.0 compliant
- CE Mark
- FCC Part 15
- NEBS Level 3, Zone 4
- RoHS
- UL/EN/IEC 60950-1, CB Scheme

OVERTURE

Overture Networks, Inc.

Research Triangle Park, NC

Tel: +1.919.337.4100

www.OvertureNetworks.com



RoHS compliant