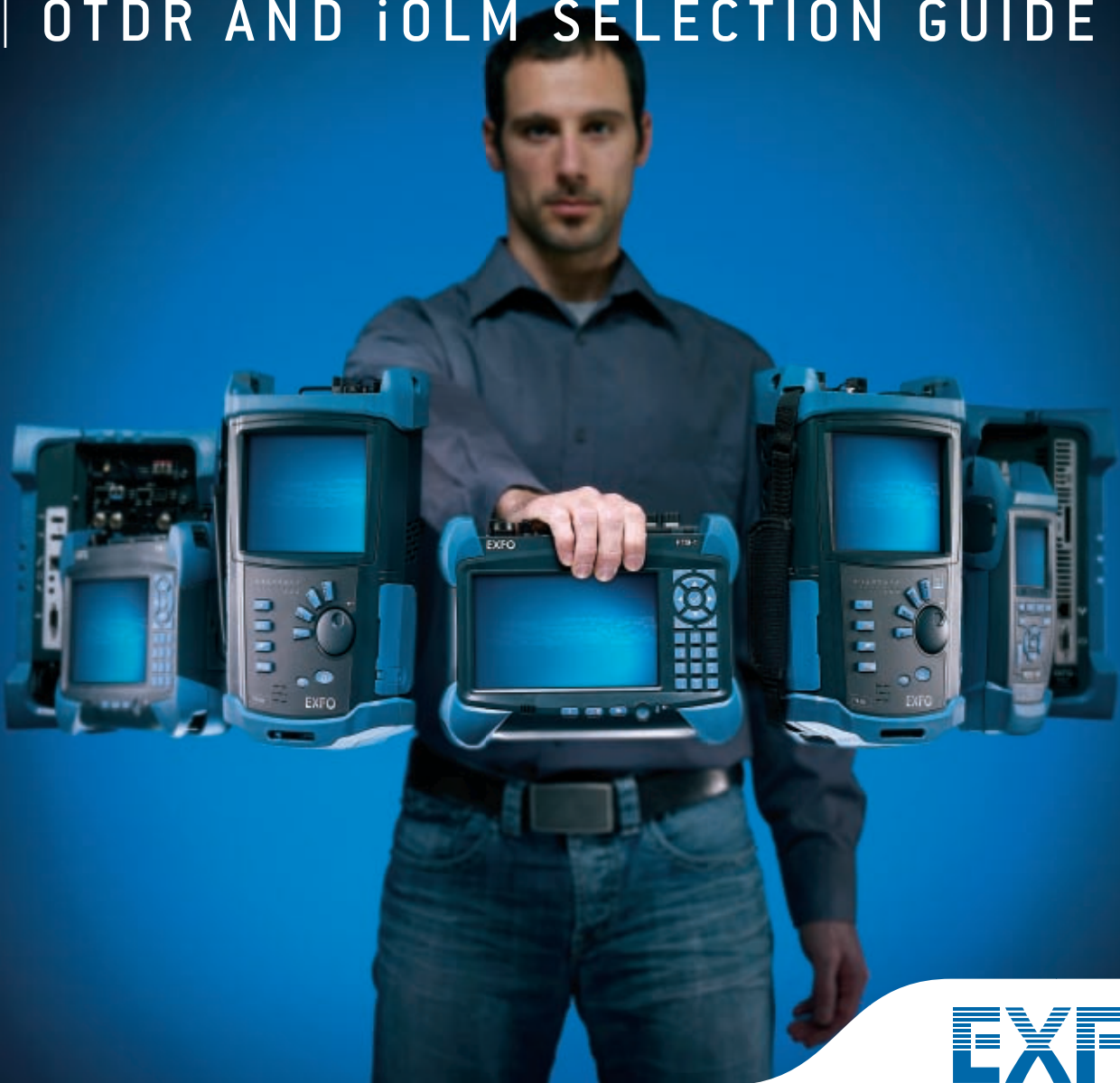


Choosing the Perfect Tool

OTDR AND iOLM SELECTION GUIDE



EXFO



Trust the World-Leading OTDR Manufacturer

The household name in OTDR technology

Since the company's inception in 1985, OTDR technology has always been at the core of EXFO's optical testing expertise. Today, with a **market share closing in on 50%** and the broadest OTDR portfolio, we have an OTDR built smart for any type of network.

As a network operator, what you can expect from EXFO is **expert-level test know-how, powerful and user-friendly tools**, as well as a **unique testing environment** to bridge the OPEX gap created by the booming bandwidth demand. With field-proven procedures, integrated test solutions and cloud-based data and hardware management, you have what it takes to confidently and cost-effectively deploy your networks.

THREE EASY STEPS TO A PERFECT FIT

1

CHOOSE YOUR NETWORK APPLICATION

True OTDR performance goes far beyond simple product specifications. It's about **optimizing your network services**, based on application-specific parameters.

2

CHOOSE YOUR FORM FACTOR

- › Compact, **dedicated handheld** test set for performing single-minded tasks under tight budget constraints
 - › **Modular handheld** platform providing more flexibility for repetitive daily tasks
 - › **Full-sized modular** platform for advanced multi-application testing
-

3

CHOOSE YOUR TECHNOLOGY

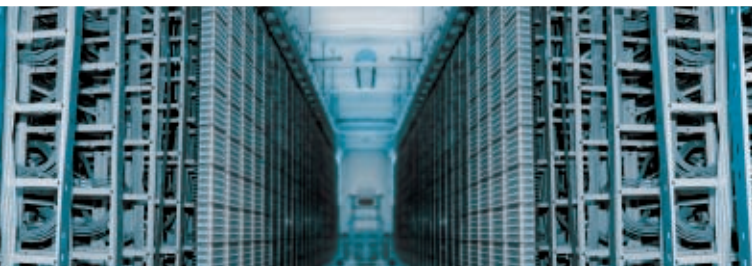
Go traditional, go bleeding-edge, or combine the best of both worlds in a single unit:

- › **Time-proven OTDR technology** with advanced modes, trace analysis and editing
 - › **Groundbreaking iOLM and Link-Aware™ technology**, with its multipulse approach, visual link depiction and per-event diagnosis
-

1

CHOOSE YOUR NETWORK APPLICATION

APPLICATIONS



LAN/WAN
DATA CENTERS
PRIVATE/ENTERPRISE
P2P ACCESS
CELLULAR BACKHAUL (FTTT/FTTA)



FTTx
PASSIVE OPTICAL (PON)
MDU
SHORT METRO



LONG-HAUL
METRO/CORE
CWDM
CATV



SUBMARINE CABLES
ULTRA-LONG-HAUL

KEY TEST REQUIREMENTS

- › Short dead zones to locate closely spaced events
 - › Multimode (MM) and singlemode (SM) testing in a single unit
 - › Controlled multimode launch conditions, for maximum loss measurement accuracy
 - › Single-button operation with clear “go/no go” status
-
- › Accrued performance without compromising resolution or dynamic range
 - › Testing through high-port-count splitters (up to 1 x 128)
 - › 1625 nm filtered port for in-service troubleshooting and maintaining QoS while testing
-
- › High dynamic range to reach greater distances
 - › High resolution to account for many closely spaced splice points
 - › The most wavelengths possible in a single unit, for efficient CWDM testing
-
- › Test reach of up to 250 km
 - › Highest dynamic range possible (up to 50 dB), for deploying and maintaining the long fiber spans typically seen in ultra-long-haul and very-high-speed networks
 - › Great linearity of ± 0.03 dB/dB without compromising resolution or reach

2

CHOOSE YOUR FORM FACTOR

HANDHELD

FULL-SIZED

DEDICATED



AXS-100 SERIES

Cost-effective, lightweight field test set

MODULAR



FTB-1* 1 SLOT

Small, yet powerful frontline platform

MODULAR



FTB-200* 2 SLOTS

Compact, multi-application platform

MODULAR



FTB-500* 4 SLOTS or 8 SLOTS

Boundless capabilities, testing unlimited



*PART OF THE
FTB Ecosystem

www.futureofdeployments.com



3

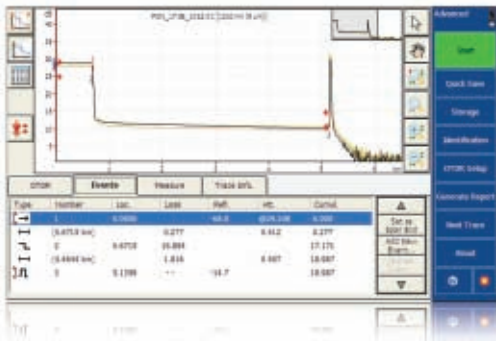
CHOOSE YOUR TECHNOLOGY

TIME-PROVEN OTDR TESTING

The key: precision of the software analysis and a feature set that accelerates test routines.

MARKET-LEADING PERFORMANCE AND UNMATCHED USER-FRIENDLINESS

- Select your preferred mode: Auto or Advanced
- Change test parameters on the fly
- Efficiently analyze traces with multi-zoom tool
- Automatically generate reports



GROUNDBREAKING iOLM APPLICATION

The intelligent Optical Link Mapper (iOLM) is an innovative OTDR-based application that redefines simplicity in fiber testing.

POWERED BY
LINK-AWARE™
TECHNOLOGY

ONE-TOUCH, AUTOMATIC ANALYSIS AND CLEAR LINK VIEW DISPLAY

Launch multiple OTDR acquisitions



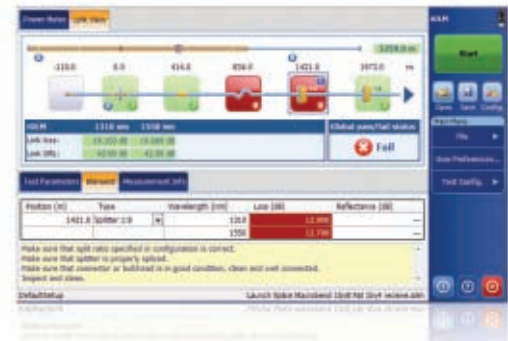
Analyze the traces



Compound the results



Display a schematic link view and prompt diagnosis



Protected by US patent 6,612,750



SPECIFIC TEST SOLUTIONS FOR SPECIFIC REALITIES

APPLICATIONS



LAN/WAN
DATA CENTERS
PRIVATE/ENTERPRISE
P2P ACCESS
CELLULAR BACKHAUL (FTTT/FTTA)



FTTx
PASSIVE OPTICAL (PON)
MDU
SHORT METRO



LONG-HAUL
METRO/CORE
CWDM
CATV



SUBMARINE CABLES
ULTRA-LONG-HAUL



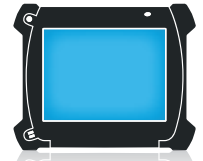
AXS-100/AXS-110



FTB-1



FTB-200



FTB-500

OTDR AND iOLM SOLUTION

> **LIGHTWEIGHT,
ON-THE-GO
ALTERNATIVE**
AXS-110

> **HIGH-EFFICIENCY
FRONTLINE TESTING**
FTB-1 + FTB-720 or
FTB-1 + FTB-720-iOLM

> **QUAD
POWERHOUSE**
FTB-200 + FTB-7200D

> **LAST-MILE, HANDHELD
TROUBLESHOOTING UNIT**
AXS-100

> **FASTER FTTx/MDU
TESTING**
FTB-1 + FTB-730 or
FTB-1 + FTB-730-iOLM

> **COMPLETE
NETWORK
CONSTRUCTION
SOLUTION**
FTB-200 + FTB-7300E

> **LIGHTWEIGHT,
ON-THE-GO ALTERNATIVE**
AXS-110

> **NO-COMPROMISE METRO/
CWDM VERSATILITY**
FTB-200 + FTB-7400E

> **TOTAL FIBER
CHARACTERIZATION KIT**
FTB-500 + FTB-7500E +
FTB-5500B + FTB-5800

> **LONG-HAUL REACH**
FTB-200 + FTB-7500E

> **ULTRA-LONG-HAUL
PORTABLE COMBO**
FTB-200 + FTB-7600E

> **ULTIMATE POWER
FOR ULTRA-LONG
DISTANCES**
FTB-500 + FTB-7600E +
FTB-5500B + FTB-5800

BOOST YOUR FIELD-TESTING PRODUCTIVITY

SOFTWARE TOOLS



AUTOMATED PASS/FAIL CONNECTOR ENDFACE ANALYSIS

Secure the first step of fiber testing

- › Save time and money: lightning-fast results through simple one-touch operation
- › Automated pass/fail analysis on any FTB platform: FTB-1, FTB-200 and FTB-500
- › Complete test reports for future referencing: stores images and results

PRODUCT CODE: **FPSA/FPMF**



EDIT, ANALYZE AND DOCUMENT RESULTS MORE EFFICIENTLY

Simplify reporting for all optical tests

- › Consolidated data management and post-processing for multiple optical test applications: OTDR, optical link mapper (iOLM), ORL, loss, PMD, CD, as well as connector inspection results
- › Powerful batch processing and bidirectional batch analysis
- › Automatic detection of duplicated measurements

PRODUCT CODE: **FR2-XX**



TRIPLE-PLAY BUNDLE FOR VOICE, VIDEO AND DATA SERVICES

Streamline testing of IP-based services

- › Voice-over-IP (VoIP) performance validation for service turn-up and troubleshooting in enterprise and service provider networks
- › IP connectivity verification with ping tool
- › Debugging of VLAN issues using VLAN scan
- › File transfer protocol (FTP) service verification
- › Quick and easy pass/fail verification of IPTV installations

PRODUCT CODES: **EXpert IP, EXpert VoIP, EXpert IPTV or EXpert TPP Bundle**



FREE 30-DAY TRIAL 

www.EXFO.com/EXFO-Store/EXFO-Apps



EXFO

FTB-1

Team	Score	Time	Goal
France	2	15'	Goal
Germany	1	30'	Goal
Spain	0		
Italy	0		
England	0		
Sweden	0		
Denmark	0		
Netherlands	0		
Portugal	0		
Greece	0		
Czech Republic	0		
Slovakia	0		
Croatia	0		
Slovenia	0		
Poland	0		
Ukraine	0		
Russia	0		

PUTTING THE FINISHING TOUCHES

CHOOSE YOUR ACCESSORIES

› Video fiber inspection probe (200/400x)

Rugged tool for connector endface inspection

PRODUCT CODE

FP4D/FP4S

› Visual fault locator

Pinpoints fiber breaks

VFL

› Power meter (GeX or InGaAs)

Accurate, built-in tool

PM2X/PM3

› CWDM power meter (GeX or InGaAs)

Built-in CWDM-calibrated tool

PM2X-CWDM/
PM3-CWDM

› Wi-Fi and Bluetooth

Built-in for enhanced connectivity

RF

› Smart kit (automated software tools)

Macrobend finder, summary screen and pass/fail thresholds

AD/EC

› IP tester

Performs basic IP tests

IPT

› Outdoor-enhanced screen

Better readability under direct sunlight

S2

› Launch test cable/pulse suppressor box

Enables loss measurements on the first and last connections

SPSB-XXX-XX

CHOOSE YOUR CONNECTORS

To maintain measurement accuracy, select **APC** over **UPC**

- › **UPC** connectors are prone to high reflectance, which affects OTDR/iOLM readings
- › **UPC** connectors wear out faster; return to factory means higher cost of ownership
- › A unit equipped with **APC** connectors can still test a **UPC** network with a hybrid launch cable (such as EXFO's SPSB/PSB/FTB-LTC)



Available singlemode connectors

- › EA-EUI-28 = APC/DIN 47256
- › EI-EUI-89 = APC/FC narrow key
- › EI-EUI-91 = APC/SC
- › EI-EUI-95 = APC/E-2000
- › EI connectors = See note below

Note

UPC connectors are also available, simply replace EA-XX by EI-XX in the ordering part number. Additional connectors available are the EI-EUI-76 (UPC/HMS-10/AG) and EI-EUI-91 (UPC/ST).



The choice is yours at EXFO.com/OTDR



EXFO