

SPECIFICATION

- **Indicators:**
 - Power ON:** LED (2), Yellow, power applied
- **Dimensions / Weight:** W:19.0"xD:7.0"xH:3.5" / 9 lb.
- **Power:** 110 / 230 VAC, 50 / 60 Hz
- **Environmental:**
 - Temperature:** 0 to 50 degrees C
 - Humidity:** 5-95% (non-condensing)

TECHNICAL SUPPORT

If you encounter problems in installing this product, contact Omnitron Tech Support:

Phone: (949) 250-6510

Fax: (949) 250-6514

Address: Omnitron Systems Technology, Inc.
140 Technology Drive, #500
Irvine, CA 92618, USA

E-mail: support@omnitron-systems.com

URL: <http://www.omnitron-systems.com>



FlexPoint™ Powered Chassis

*AC Power-Redundant
14-Module Chassis*

User's Manual

Safety Considerations

Warning

The operating description in this Instruction Manual is for use by qualified personnel only. To avoid electrical shock, do not perform any servicing of this unit other than that contained in the operating instructions, unless you are qualified and certified to do so by Omnitron Systems Technology, Inc.

Caution

All user-required operations can be performed without opening the unit. Never attempt to open or remove the cover or tamper with the unit or tamper with the power supply module.

Warranty

This product is warranted to the original purchaser against defects in material and workmanship for a period of TWO YEARS from the date of shipment. A LIFETIME warranty may be obtained by the original purchaser by REGISTERING this product with Omnitron within 90 days from the date of shipment. TO REGISTER, COMPLETE AND MAIL OR FAX THE REGISTRATION FORM INCLUDED WITH THIS INSTRUCTION MANUAL TO THE INDICATED ADDRESS. Or you may register your product on the Internet at <http://www.omnitron-systems.com>. During the warranty period, Omnitron will, at its option, repair or replace a product which is proven to be defective.

For warranty service, the product must be sent to an Omnitron designated facility, at Buyer's expense. Omnitron will pay the shipping charge to return the product to Buyer's designated US address using Omnitron's standard shipping method.

Limitation of Warranty

The foregoing warranty shall not apply to defects resulting from improper or inadequate use and/or maintenance of the equipment by Buyer, Buyer-supplied equipment, Buyer-supplied interfacing, unauthorized modifications or tampering with equipment (including removal of equipment cover by personnel not specifically authorized and certified by Omnitron), or misuse, or operating outside the environmental specification of the product (including but not limited to voltage, ambient temperature, radiation, unusual dust, etc.), or improper site preparation or maintenance.

No other warranty is expressed or implied. Omnitron specifically disclaims the implied warranties of merchantability and fitness for any particular purpose.

Exclusive Remedies

The remedies provided herein are the Buyer's sole and exclusive remedies. Omnitron shall not be liable for any direct, indirect, special, incidental, or consequential damages, whether based on contract, tort, or any legal theory.

5. Loosen the 2 screws securing the power supply to the main chassis (see illustration on page 6).
6. Remove the faulty power supply.

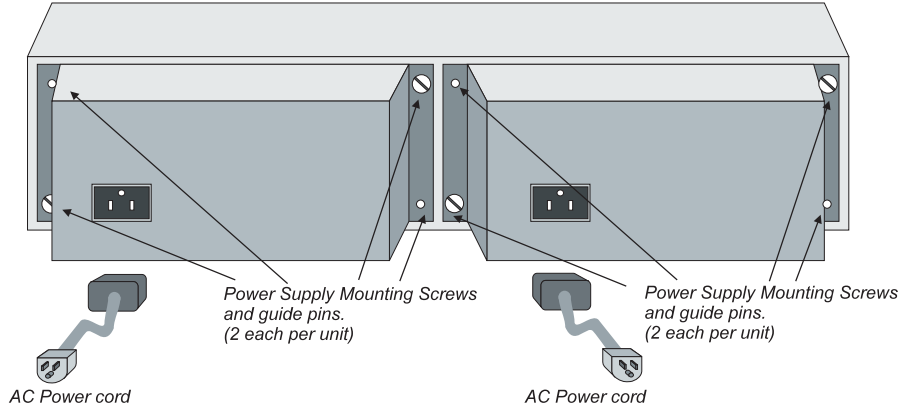
Hot Attachment of Power Supplies:

1. Unpack the power supply carefully. Inspect for any damages. If any damage is observed, do not use the power supply and call (949) 250-6510 to report the damage immediately and request a replacement unit.
2. Align the guide pins of the chassis with the holes in the power supply; tighten the screws with a flat head screw driver.
3. Plug the AC cord to the back of the power supply.
4. Plug the AC cord to the AC wall outlet.
5. Watch and listen to the fan in the rear of the power supply start to run.
6. Watch and observe the LED in the front of the chassis indicating that the power has been restored.
7. Save the packing material of the power supply for shipment of the faulty power supply or for future reuse.

The Powered Chassis is intended to be used with two power supplies in a power-redundant operation. A failure of a single supply should not disturb the operation of the chassis unit. However, certain power supply failures may cause a secondary failure to the associated fan and cause undesired overheating of the chassis unit.

It is very strongly recommended that a replacement power supply unit be installed as soon as possible in order to prevent overheating of the chassis unit.

THE POWER SUPPLIES ARE HOT-SWAPPABLE AND CAN BE REPLACED WITHOUT SHUTTING THE NETWORK DOWN. HOWEVER, WHEN REMOVING AND REPLACING A POWER SUPPLY UNIT, THE FOLLOWING STEPS MUST BE STRICTLY FOLLOWED IN ORDER TO PREVENT SERIOUS INJURY OR DEATH, OR SERIOUS DAMAGE TO YOUR EQUIPMENT.



Hot Removal of Power Supplies:

1. Determine which one is the faulty power supply by observing the LEDs in the front left of the chassis: the top LED indicates the power status of the right power supply (as observed from the front), the bottom LED indicates the power status of the left power supply (as observed from the front). Notice that LED being ON indicates that the power supply is operational. The LED being OFF may indicate that the AC power is not applied, please verify that your AC power source is providing power.
2. Once you determine that your AC plug is connected properly to an AC wall outlet, and the power supply LED is still not ON, determine which is the failing power supply unit and proceed to the next step.
3. Remove the AC power cord of the faulty power supply from the wall outlet.
4. Remove the AC power cord of the faulty power supply from the power supply unit.

FlexPoint™ Powered Chassis User's Manual

GENERAL DESCRIPTION

The FlexPoint™ Powered Chassis is a chassis capable of holding up to 14 FlexPoint™ media converter modules. It is equipped with two power supplies in a power-redundant configuration. The FlexPoint 14-Module Power-Redundant Powered Chassis supports all FlexPoint modules.



This User's Manual describes the following AC models:

| <u>Model</u> | <u>Description</u> |
|--------------|---|
| 4395 | Powered Chassis, rack-mountable chassis, 2 power supplies |
| 4396 | Powered Chassis, rack-mountable chassis, 1 power supply |
| 4399 | Power supply unit for models 4395 and 4396 |

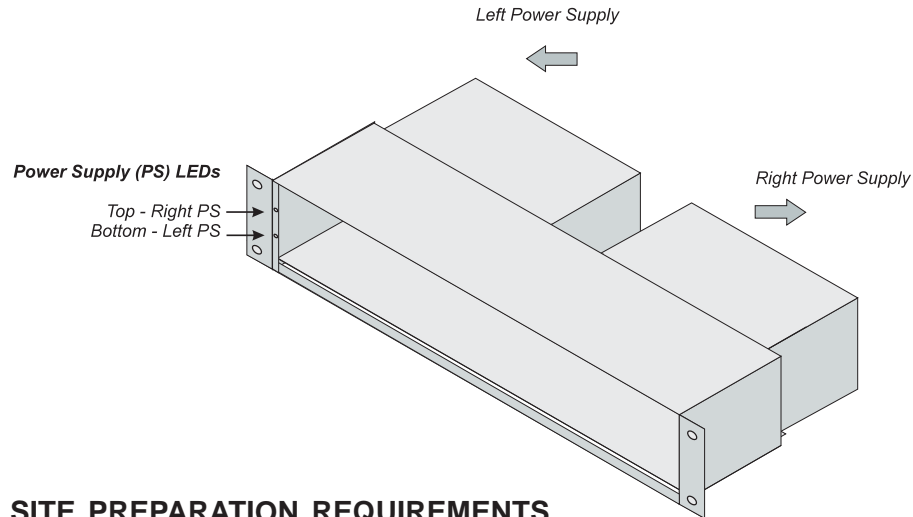
CONTROLS AND INDICATORS

LEDs Display:

The Powered Chassis features two LEDs on the left front of the chassis, these LEDs display the status of the two power supplies.

| <u>Function</u> | <u>Color/State</u> | <u>Description</u> |
|-----------------|--------------------|--------------------------------|
| Top LED | Yellow / ON | Power OK in right power supply |
| Bottom LED | Yellow / ON | Power OK in left power supply |

Note: Left/right direction as viewed from the front of the chassis.



SITE PREPARATION REQUIREMENTS

1. Power: Two power outlets should be available within 5 feet of the unit.
2. The operating temperature of this equipment is 0-50 degrees C. If installed in a closed or multi-unit rack assembly, the operating ambient temperature of the rack must not exceed the maximum rated 50 degrees C temperature.
3. Installation of the equipment should be such that the air flow in the front and back of the unit is not compromised or restricted.
4. Never use this equipment to carry any weight except its own, never use it as a shelf to support weight of other equipment.
5. Installing this equipment into a rack in such a way as to make it unstable may cause injury or death. Always make sure that the rack you are installing this equipment into is properly secure, stable, balanced and designed to carry the weight and weight distribution of this equipment.
6. When rack-mounting this equipment, the rack should be appropriately earth-grounded.
7. This equipment requires 110VAC / 1.5 Amps at 60Hz (or 220VAC / .75 Amps at 50Hz) power per outlet (two outlets are required) to a combined total of 110VAC / 3.0 Amps at 60Hz (or 220VAC / 1.5 Amp at 50Hz). Appropriate overloading protection should be provided on all AC power source outlets utilized.

UNPACKING

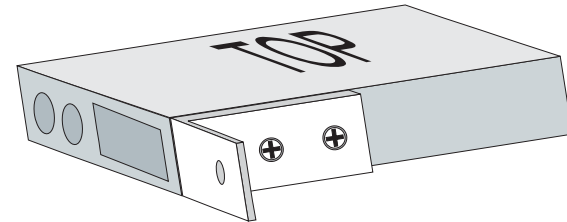
- a. Visual Inspection: Inspect equipment in order to detect any physical damage. Any evidence of damage should be noted and reported immediately.

INVENTORY

Review contents, the following items should be included:

- (1) FlexPoint Powered Chassis unit.
- (2) Power supplies (2 for model 4395, 1 for model 4396).
- (14) L shape tabs.
- (14) Screws
- (1) User's manual (this document).

Please note any missing items or discrepancies and report them immediately.



INSTALLATION

Cabling and Power-Up:

- a. Plug the two power cords into two appropriate AC wall outlets. The two LED power lights should turn ON.
- b. Attach the L shaped tabs to the FlexPoint units to be inserted into the chassis, Secure the FlexPoint module using the enclosed screws.
- c. Save the unused tabs in a safe place or secure them to the chassis' unused slots.

POWER SUPPLY REPLACEMENT

WARNING

NEVER ATTEMPT TO OPEN OR SERVICE THE POWER SUPPLY UNIT. OPENING THE POWER SUPPLY UNIT MAY CAUSE SERIOUS INJURY OR DEATH.