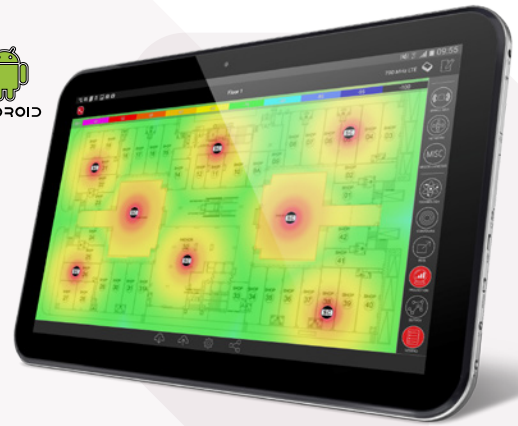




iBwave Mobile PLANNER



MOBILIZE YOUR FIELD TEAM

iBwave Mobile Planner is the first and only in-building wireless application that allows you to perform complete indoor designs for both small cells and Wi-Fi, directly from your smartphone and tablet, thus saving over 60% of your engineering time! As the feasibility of access point locations can be validated on site, the number of site visits prior to installation is also considerably reduced.

CREATE SYSTEM DESIGNS FOR SMALL CELLS AND Wi-Fi

Validate the coverage of access points from the field and save on engineering time and future site visits.

- ✓ Select access points from our components database which contains over 150 small cells & 130 Wi-Fi APs and drop them at strategic floor plan locations
- ✓ Add network equipment and miscellaneous parts to complete the design
- ✓ Document the routing of cable using the markup layer

COVERAGE, DATA THROUGHPUT & HANDOFF PREDICTION MAPS

Increase the accuracy of your designs and run prediction maps that account for RF Measurements.

- ✓ Create multiple prediction zones with various density levels to quickly model the building without having to draw every single wall
- ✓ Collect surrounding Wi-Fi coverage
- ✓ Run RSSI, Data rate and Soft-handoff output maps for multiple bands with the new Variable Path Loss Exponent propagation model, that takes into account interferences between small cells & collected RF measurements

COLLECTION TOOL INTEGRATION

Streamline the RF collection process, reduce manual steps and leverage measurements in your design.

- ✓ Exchange project information seamlessly with third party collection tools running on the same tablet or smartphone
- ✓ Integrate cellular & Wi-Fi collected data on floor plans and take into account pre-site walk measurements for data throughput output maps

“ iBwave Mobile Planner is an all-in-one tool that allows RF Engineers to perform complete indoor wireless network designs directly from their smartphone or tablet. This innovative app is being used by leading operators and system integrators who are looking to streamline their Small Cells and Wi-Fi deployment life cycle in order to increase their ROI and better address the growing demand for in-building wireless coverage and connectivity

Benoit Fleury
VP, Products and Innovation
at iBwave



iBwave MOBILE PLANNER software features

PROJECT INFORMATION

Download / upload projects to iBwave Unity Enterprise or iBwave Cloud
View design plans and floor plans
View location of equipment and cable routes
View equipment properties

COLLECT SURVEY INFORMATION

Create a project from iBwave Mobile
Create floor plans from a picture or using your camera
Scale and geolocalize floor plans
Create geolocated pushpins with text, pictures, video or audio clips
Ability to draw on pictures
Create markups on floor plans

MODIFY DESIGN CONFIGURATION

Update DAS Design Information:
All: modify component location, height
Antennas: modify azimuth, down tilt, mount orientation
Cables: modify cable routes, document measured length

SYSTEM DESIGN FOR SMALL CELLS AND WI-FI

System design for small cells and Wi-Fi
Access to the iBwave Database of Components
(Small Cells, Wi-Fi Access points, Network equipment, Miscellaneous parts)
RSSI Contours
Data throughput contours (HSPA and LTE)
Automatic calibration of contours based on basic RF measurements
(Android with Cellular capabilities)

COLLECTION TOOL INTEGRATION

Display survey measurements (RSSI) on floor plans
Consider pre-installation RF measurement for data throughput propagation maps
Share project information with third party collection tools
Include RF measurements from third party tools in the iBwave project (All measurements)
for later access in iBwave Design

CLOUD SERVICES

Store and share projects online using ibwavecloud.com
10 GB of storage included per license
5 users included per license
Send projects by emails to external partners
Central Database of Components accessible from iBwave Mobile and iBwave Design

INTEGRATION TO iBwave DESIGN

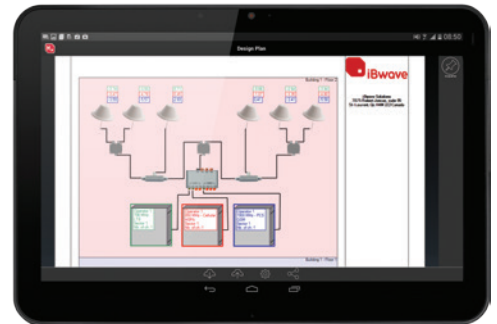
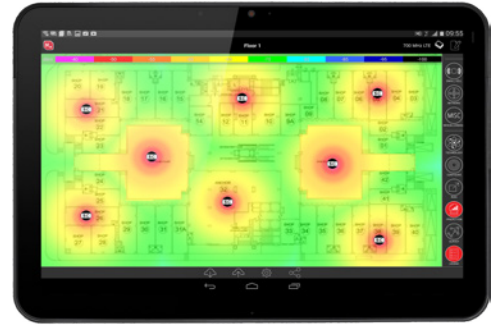
Import iBwave Mobile data in iBwave Design
Approve / reject individual changes
View pushpin location and content
View markup information on floor plans
Used cable measured lengths for the equipment list, link budget and propagation maps

MINIMUM REQUIREMENTS

Android version 4.0.3 or higher
1GHz CPU, 1GB of RAM
Wi-Fi or cellular internet connectivity

iBwave Mobile Planner

Intuitive, user-friendly interface allows you to work smarter and faster.



Design plan



Floor plan



View your site survey in iBwave Design