

# EXFO MULTILINK

GLOBAL NETWORK TEST MANAGEMENT SOFTWARE



Connects multiple users to EXFO modules and LTB-8 platforms remotely, through any web browser.

## KEY FEATURES

### Centralized management:

Global view of all platforms and modules, no external server required

### Connectivity:

Multi-user, multimodule, multiplatform connectivity

### Multi-User Management:

Status and allocation information per user

### User Experience:

Web-based, single graphical user interface (GUI) viewer with no software installation required

### Automation:

Automate test equipment per management session

### Test-Asset Management:

Management of test-module inventory

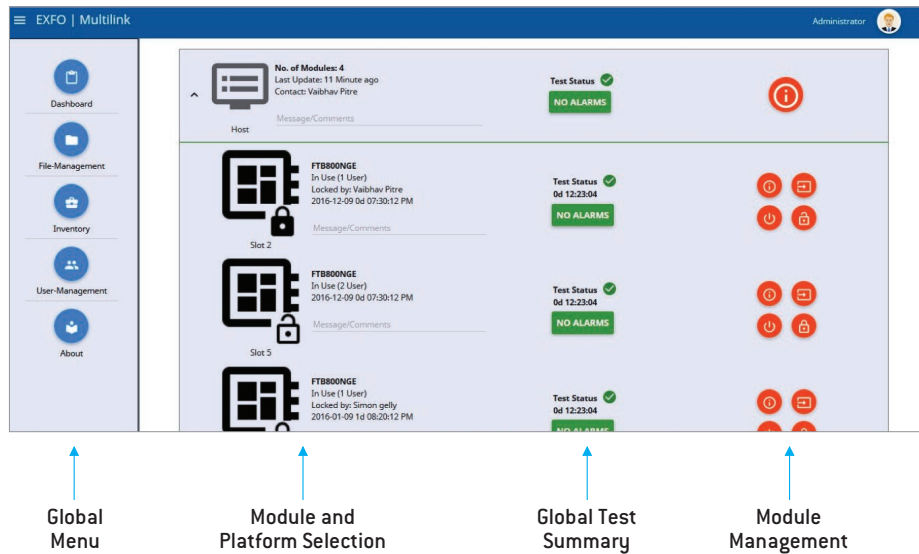
## COMPLEMENTARY PRODUCT



Platform  
LTB-8

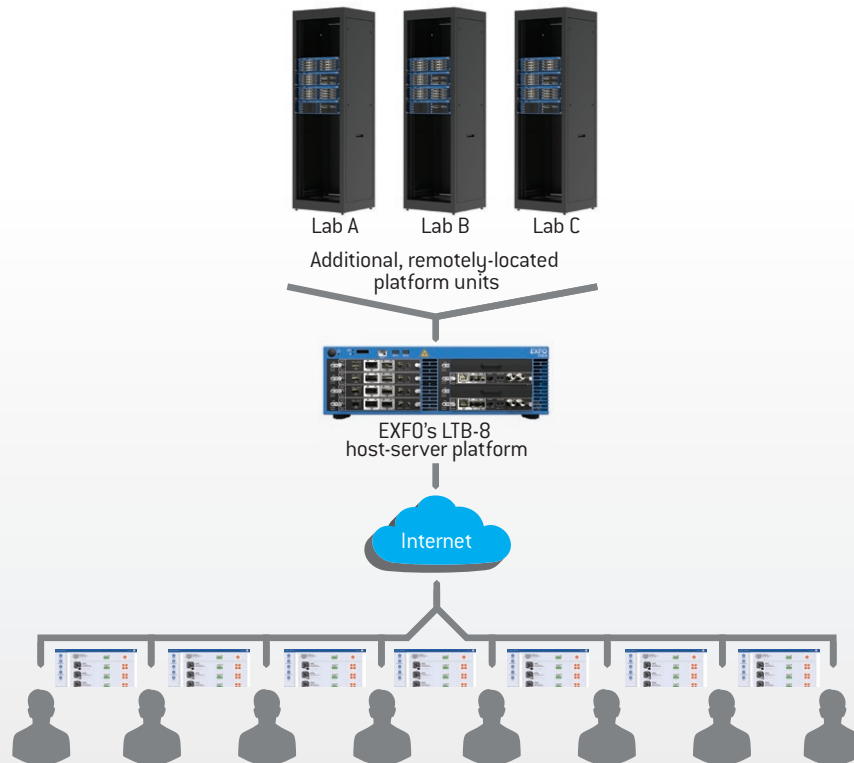


EXFO Multilink is a multi-user, multimodule and multiplatform software application that enables remote-control access of each platform and module through a centralized dashboard featuring an easy-to-use GUI. Through EXFO Multilink, software updates can be done remotely and scheduled so that the impact on available testing time is limited.



EXFO Multilink enables multiple users to connect to any lab location through EXFO’s LTB-8 host server, with no external server required. EXFO Multilink’s global dashboard is accessible through any popular web browser using any personal computer or tablet.

**Multi-User, Multimodule, Multiplatform Web-Based System**

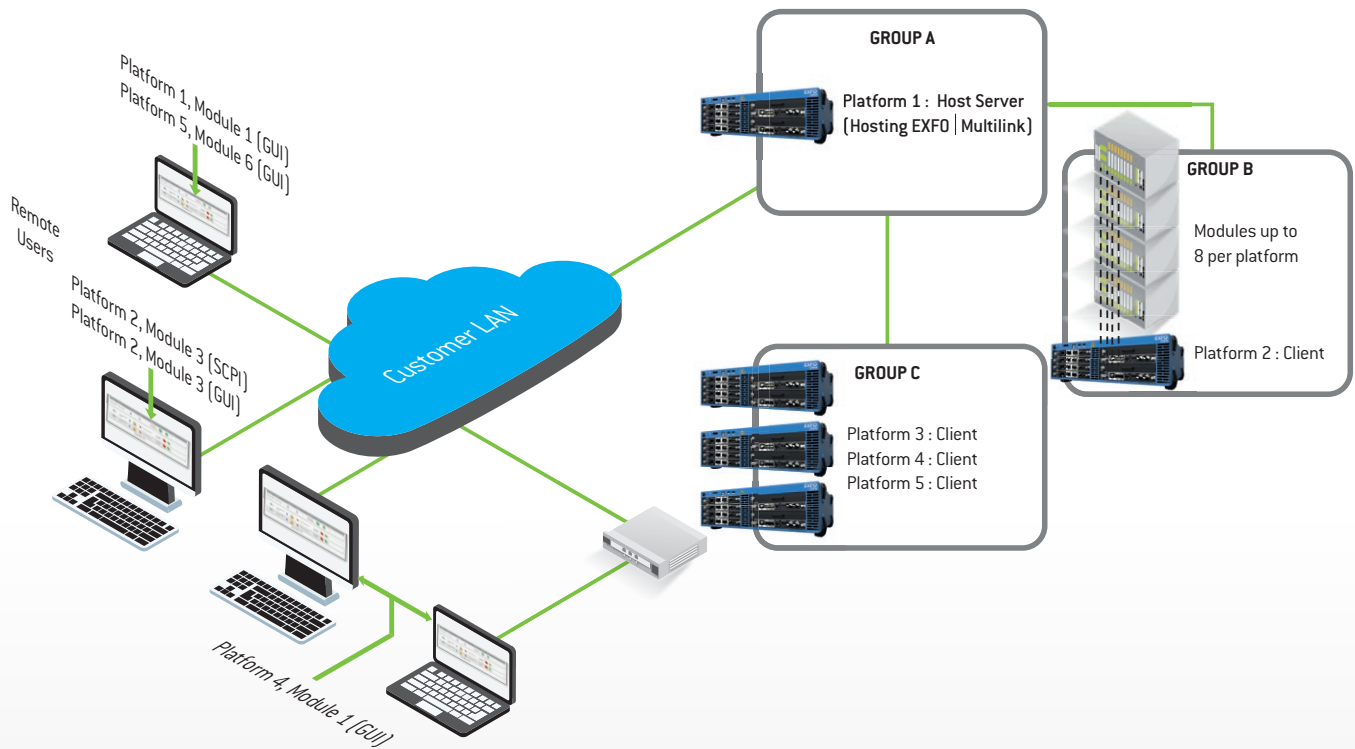


EXFO Multilink provides full visibility of the GUI of accessed EXFO modules—simplifying the user experience.



Compatible with: Internet Explorer 9 and up, Firefox and Chrome

EXFO Multilink allows different users to connect to a centralized host server LTB-8 platform, enabling remote access to multiple remote platforms deployed in different locations, simplifying the user experience.



EXFO Headquarters > Tel.: +1 418 683-0211 | Toll-free: +1 800 663-3936 (USA and Canada) | Fax: +1 418 683-2170 | info@EXFO.com | [www.EXFO.com](http://www.EXFO.com)

EXFO serves over 2000 customers in more than 100 countries. To find your local office contact details, please go to [www.EXFO.com/contact](http://www.EXFO.com/contact).

EXFO is certified ISO 9001 and attests to the quality of these products. EXFO has made every effort to ensure that the information contained in this specification sheet is accurate. However, we accept no responsibility for any errors or omissions, and we reserve the right to modify design, characteristics and products at any time without obligation. Units of measurement in this document conform to SI standards and practices. In addition, all of EXFO's manufactured products are compliant with the European Union's WEEE directive. For more information, please visit [www.EXFO.com/recycle](http://www.EXFO.com/recycle). Contact EXFO for prices and availability or to obtain the phone number of your local EXFO distributor.

For the most recent version of this spec sheet, please go to the EXFO website at [www.EXFO.com/specs](http://www.EXFO.com/specs).

In case of discrepancy, the web version takes precedence over any printed literature.