



Mentum Geodata

High-Quality Geodata for High-Accuracy Modeling

Mentum Geodata is a set of telecom-grade digital mapping data products that is optimized to work with network planning software products. The Mentum Geodata portfolio has the depth and breadth to provide operators, vendors and consulting firms with products that fulfill their requirements and are within their budgets. Unlike generic geodata suppliers, InfoVista develops, produces and benchmarks geodata products that are specifically designed for the telecom sector, delivering best-in-class radio performance. This innovation translates into new and improved product offerings and new ways of delivering them. With a library that is unmatched in quality and coverage, InfoVista is the number one choice in the telecom industry when accuracy matters.

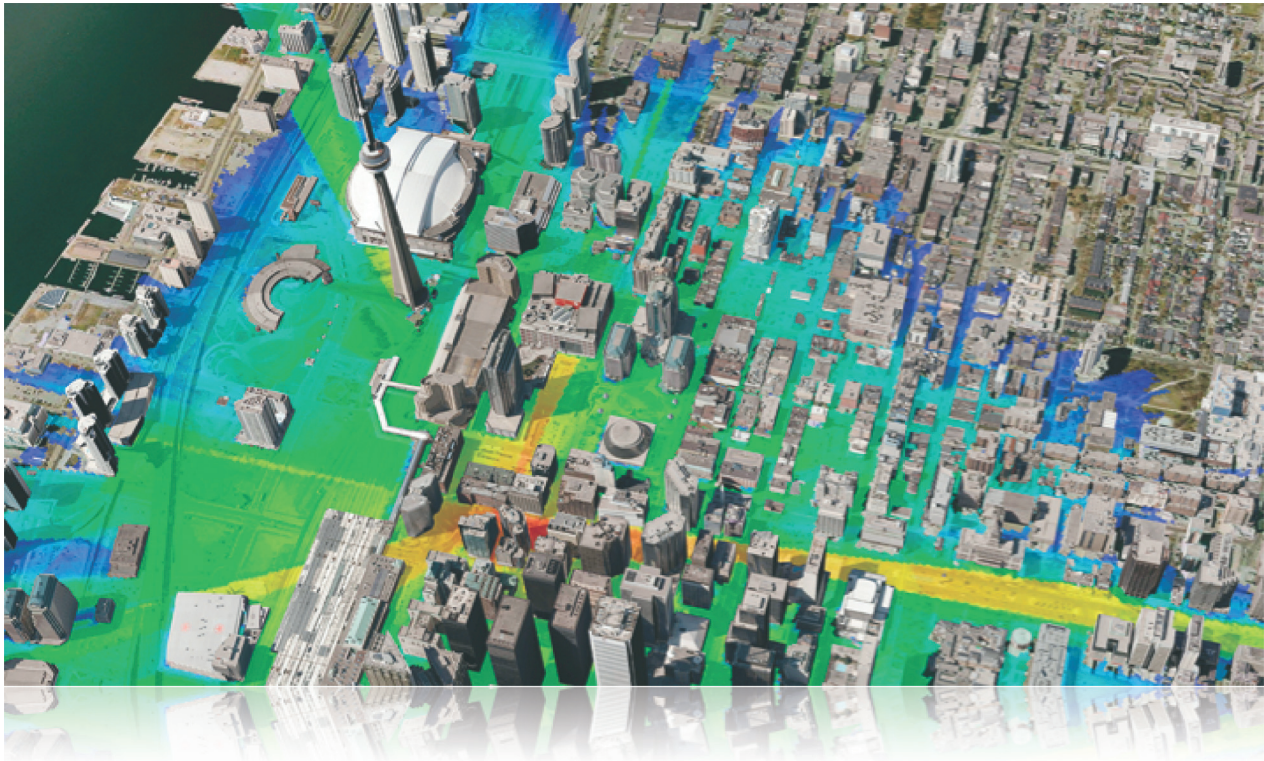


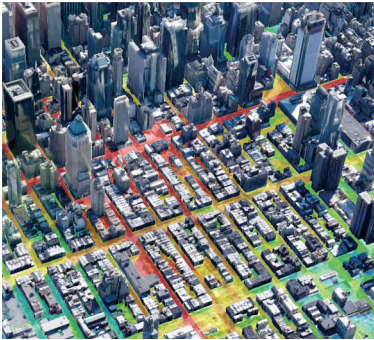
Figure 1. High-quality, telecom-graded geodata designed for high accuracy network planning.



At InfoVista, we measure geodata quality in terms of modeling accuracy because, in the end, this is what matters, paving the way for:

- Better Decisions
- Improved Modeling Accuracy
- Superior Results

InfoVista delivers the most advanced geodata available enabling network operators to exploit information resources to make sound decisions and deploy better networks.

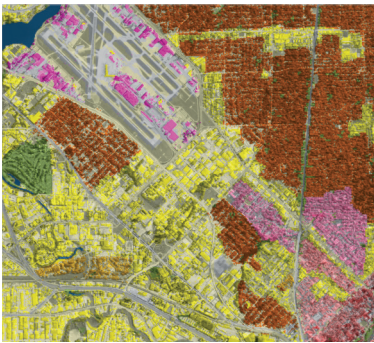


Skylines

Skylines databases provide detailed 3D building models for urban centers and are derived from the best high-resolution satellite and aerial imagery available.

Typical Use Cases

- Dense urban planning
- 3D-network design
- Indoor performance assessment
- Planning for capacity
- Small cells design

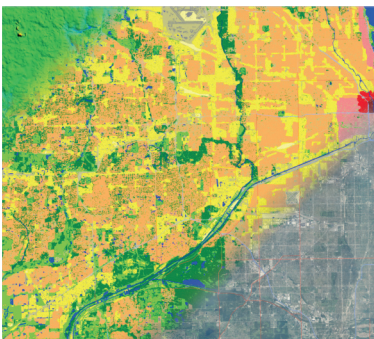


Cityscapes HD

Cityscapes HD is a major breakthrough in the wireless industry and is designed for work in sprawling metropolitan areas where both man-made structures and vegetation play an important role in defining propagation characteristics. Network operators will experience substantial benefits including improved propagation modeling accuracy, increased model reusability and robustness, and reduced reliance on propagation model calibration.

Typical Use Cases

- High-accuracy propagation
- Metropolitan network design
- Planning for capacity
- Small cells design



Cityscapes

Cityscapes is designed to meet detailed network planning requirements in geographically diverse areas, and remains the standard input when you want a good balance between propagation modeling accuracy, price and performance.

Typical Use Cases

- Mobile network planning
- Network optimization
- Any project anywhere



Landscapes

The Landscapes product is a medium to low-resolution database designed for large-area planning and is the ideal solution in initial network planning, network planning in rural areas or bid-preparation.

Typical Use Cases

- Large area planning
- Bid preparation
- Cost-constrained projects
- Projects with tight deadlines

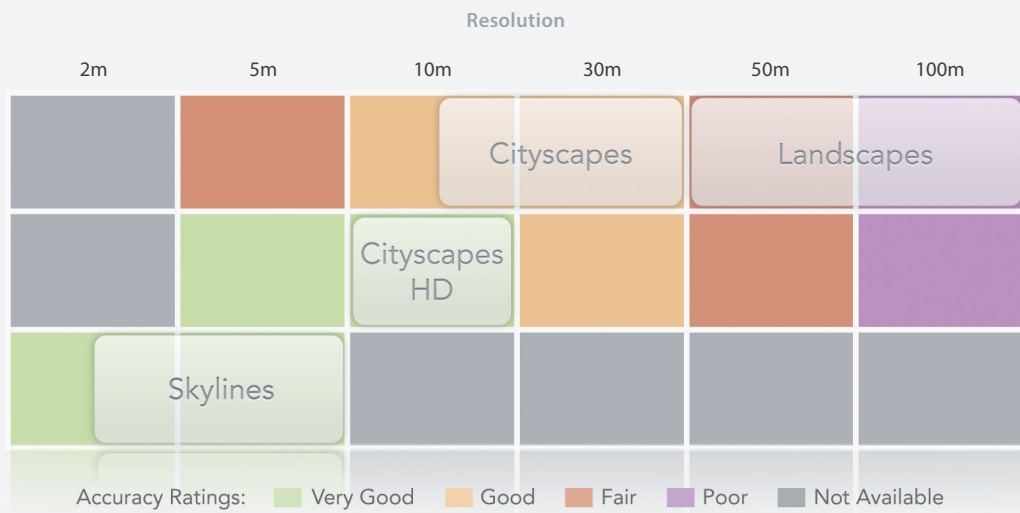
At InfoVista, we use our radio propagation and network modeling expertise to create innovative geodata products that are designed for your specific telecom requirements. Delivering better propagation accuracy, our geodata products enable improved management of network capacity, coverage and quality. Across the globe, InfoVista has provided expert guidance in the area of propagation modeling to customers so they benefit from our innovation and experience.

Key Points

- Single-source provider
- High-quality data
- Comprehensive library
- Expert guidance

The Right Geodata for the Right Accuracy

Using the proper geodata for your project is an important step in ensuring the best possible propagation modeling results, which is why InfoVista offers products specifically designed to meet the planning needs of each environment.



3D Building Models

Highly accurate vector representation of buildings within a city.

Linear Vectors

Various geographic data represented by lines, polygons or points including roads, rivers, political boundaries, demographic data and place names.

Land Use

Raster representation of the earth surfaces categorized into classes.

Orthoimage

Orthorectified satellite image tied to the dataset as a visual reference of the area of interest.

Terrain

Raster representation of the land elevation typically referred to as a DTM.

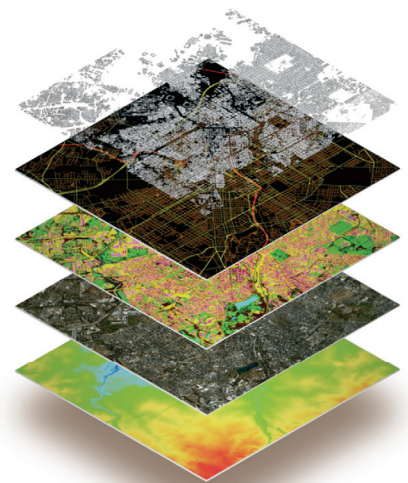
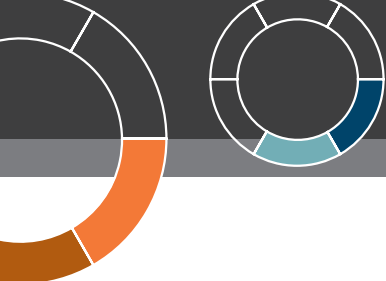


Figure 2. Geodata layers



Mentum Geodata Benefits

Unmatched Accuracy.

Accurate simulation of real-world conditions enables reliable budgeting, efficient planning and optimal return on investment.

Customized.

Mentum's best-in-class geodata is precisely tailored to RF planning tool requirements.

Improved Performance.

Better network models drive better decisions that boost performance.

Increased Efficiency.

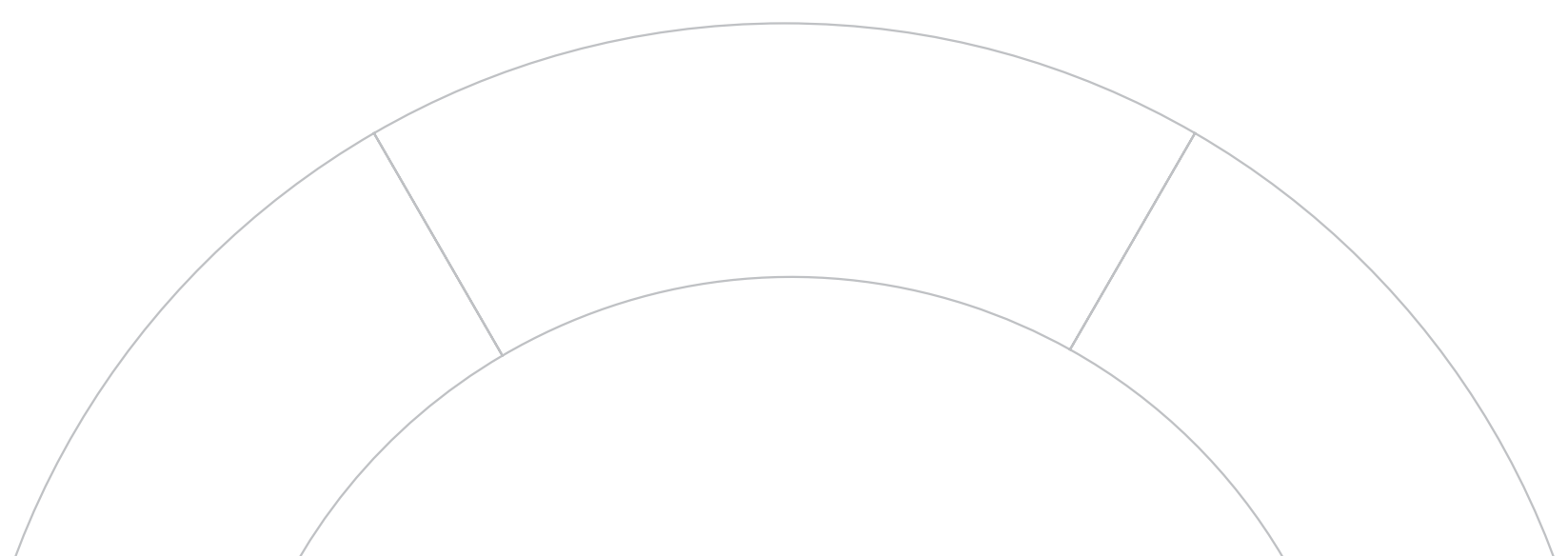
Improved network design decreases the need for post-deployment optimization.

Cost-effective.

Flexible options are available to suit any budget.

Proven Success.

Mentum is the trusted source for network planning software for more than 375 customers globally.



About InfoVista

InfoVista is the leading provider of IP and RF planning, assurance and optimization software solutions and services that enable efficient network and IT transformations. Our award-winning solutions empower communications service providers and IT-intensive enterprises to deliver high-performing and differentiated services while cost-effectively planning, operating, optimizing and monetizing their network. InfoVista's combined expertise and technology innovations in radio and IP networks provide more than 550 customers worldwide with a new level of network intelligence, visibility and control across the entire network life cycle. Using InfoVista's solutions, they deliver optimal quality of service, ensure a high-quality user experience, invest appropriately and consolidate their OSS/BSS ecosystems while keeping total cost of ownership as low as possible. For more information, please visit www.infovista.com.



For more information, please visit www.infovista.com
For sales inquiries please email marketing@infovista.com

Copyright 2013 InfoVista S.A. All rights reserved.

**World and European
Headquarters**
InfoVista S.A.

6, rue de la Terre de Feu
91952 Courtaboeuf Cedex
Les Ulis, France
Tel +33 (0) 1 64 86 79 00
Fax +33 (0) 1 64 86 79 79

Americas Headquarters
InfoVista Corporation

12950 Worldgate Drive
Suite 250
Herndon, VA 20170
United States
Tel +1 703 435 2435
Fax +1 703 435 5122

Asia-Pacific Headquarters
InfoVista (Asia-Pacific) Pte Ltd

Block 750C, #03-16/17
Chai Chee Road
TechnoPark @ Chai Chee
Singapore 469003
Tel +65 6449 7641
Fax +65 6449 3054